

VMS (Video Management System)

User Manual for Win

Version:8.1.24.5

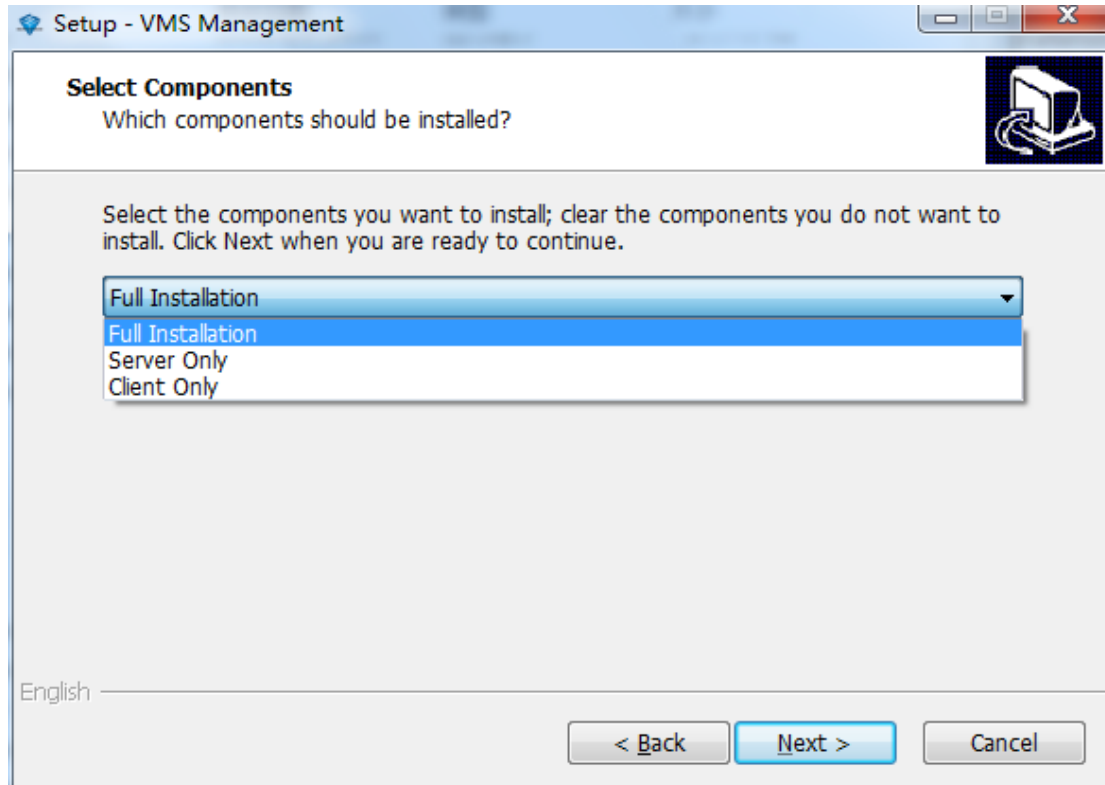
Catalog

Catalog.....	II
1 Installation.....	1
2 VMS usage and operating instructions.....	2
2.1 server and operating instructions.....	2
2.1.1 Login.....	2
2.1.2 Adding a hardware device.....	3
2.1.2.1 Adding scanning equipment.....	4
2.1.2.1.1 specified IP range scanning hardware.....	4
2.1.2.1.2 specify scanning hardware manufacturers.....	5
2.1.2.1.3 Configuring automatic verification.....	5
2.1.2.1.4 Start Depending on how the search appliance.....	6
2.1.2.1.5 Manual Verification hardware.....	7
2.1.2.1.6 Completing the Add Hardware.....	7
2.1.2.2 Manually Add Device.....	8
2.1.2.2.1 IP address is added hardware.....	8
2.1.2.2.2 Adding hardware serial number.....	9
2.1.2.3 edit device properties.....	10
2.1.2.3.1 modify the hardware device name.....	12
2.1.2.3.2 modify the hardware device port number, user name and password.....	13
2.1.2.3.3 Modify the channel name.....	13
2.1.3 Storage Configuration.....	15
2.1.3.1 configure the storage path, stream type, retention time.....	16
2.1.3.2 configure the recording type, time change.....	17
2.1.3.3 Configuration Template.....	17
2.1.4 Server Access.....	18
2.1.5 User Management.....	19
2.1.5.1 Edit User Information.....	19
2.1.5.2 Edit User Permissions.....	19
2.1.6 Service.....	20
2.2 client and operating instructions.....	22
2.2.1 Login.....	22
2.2.2 Live Preview.....	23
2.2.2.1 Live Preview Features.....	24
2.2.2.2 View switching video.....	24

2.2.2.3 Select a camera preview video.....	25
2.2.2.4 PTZ control	25
2.2.2.5 Video Window Toolbar Function	26
2.2.2.6 View polling.....	27
2.2.2.7 Full Screen	27
2.2.3 Playback.....	28
2.2.3.1 Playback Interface Features	28
2.2.3.2 platform video playback.....	29
2.2.3.2.1 switch views video playback.....	29
2.2.3.2.2 The limiting choose camera video playback.....	29
2.2.3.2.3 Video Search.....	30
2.2.3.2.4 video playback.....	30
2.2.3.2.4.1 synchronous playback	30
2.2.3.2.4.2 independent playback	31
2.2.3.2.4.3 loop playback	32
2.2.3.3 Export Video Platform	32
2.2.3.4 Device Playback.....	35
2.2.3.4.1 Select playback video camera	36
2.2.3.4.2 Video Search.....	36
2.2.3.4.3 video playback.....	37
2.2.3.5 Export recording equipment	38
2.2.4 Electronic Map.....	38
2.2.4.1 Editing Electronic map.....	39
2.2.4.1.1 Edit Electronic map.....	39
2.2.4.1.2 Add camera elements	41
2.2.4.1.3 Add other elements.....	41
2.2.4.2 Preview Electronic map.....	42
2.2.5 Management function.....	43
2.2.5.1 Export List.....	43
2.2.5.2 View Settings	44
2.2.5.2.1 View Editor	44
2.2.5.2.1.1 New View	44
2.2.5.2.1.2 view content editor	45
2.2.5.2.1.3 Modify the view name	47
2.2.5.2.1.4 Delete View	48
2.2.5.2.1.5 Set View polling.....	48
2.2.5.2.1.6 Save Edit	49
2.2.5.3 System parameter settings.....	50
2.2.6 Logout.....	50

1 Installation

VMS consists of two parts, VMS VMS server and client, you can choose to install VMS VMS server and client installed on the same computer, can also be installed separately on different local computer, select the default full installation.



2 VMS usage and operating instructions

2.1 server and operating instructions

2.1.1 Login



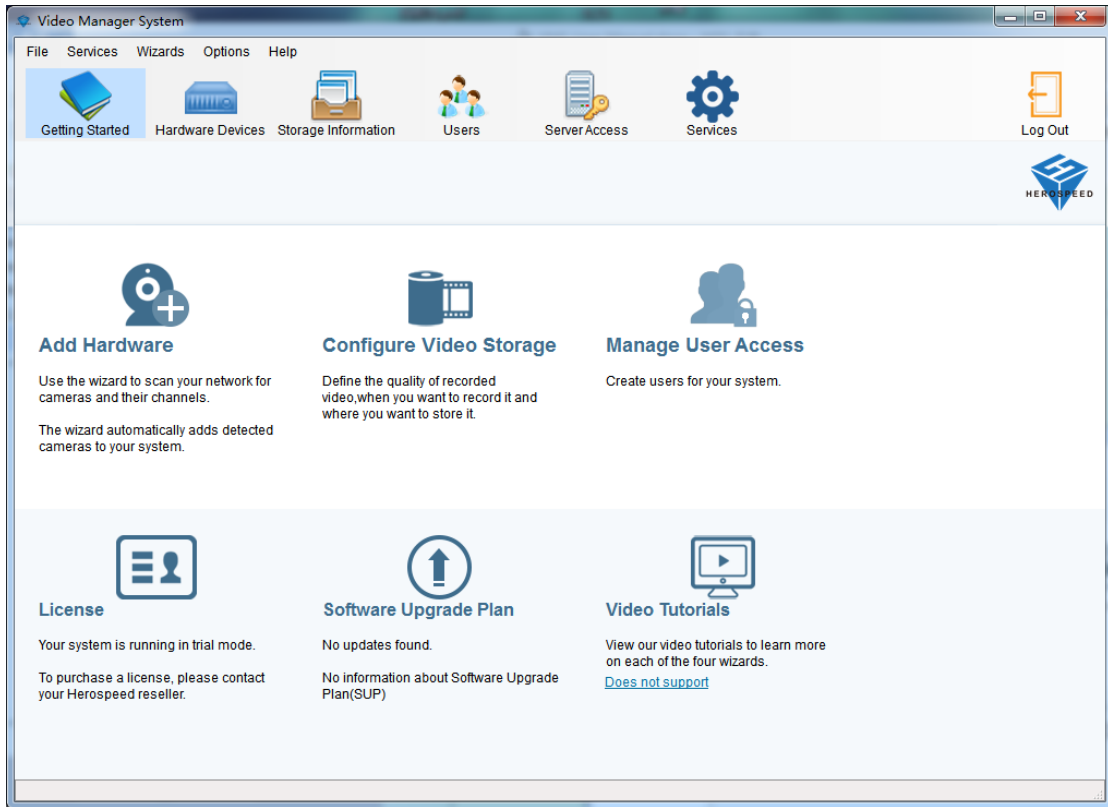
Double-click on the desktop icon to start the server management program, start interface as the first use of VMS Management program, you need to create a superuser

A dialog box titled 'Login to Management Application' with the Herospeed logo. It contains the text 'The first landing of the system, please add users'. Below this are three input fields: 'User name:', 'Password:', and 'Confirm Password:'. There is a checkbox for 'Save Username' and two buttons: 'Add' and 'Cancel'.

Use super-user or administrator user login VMS Management

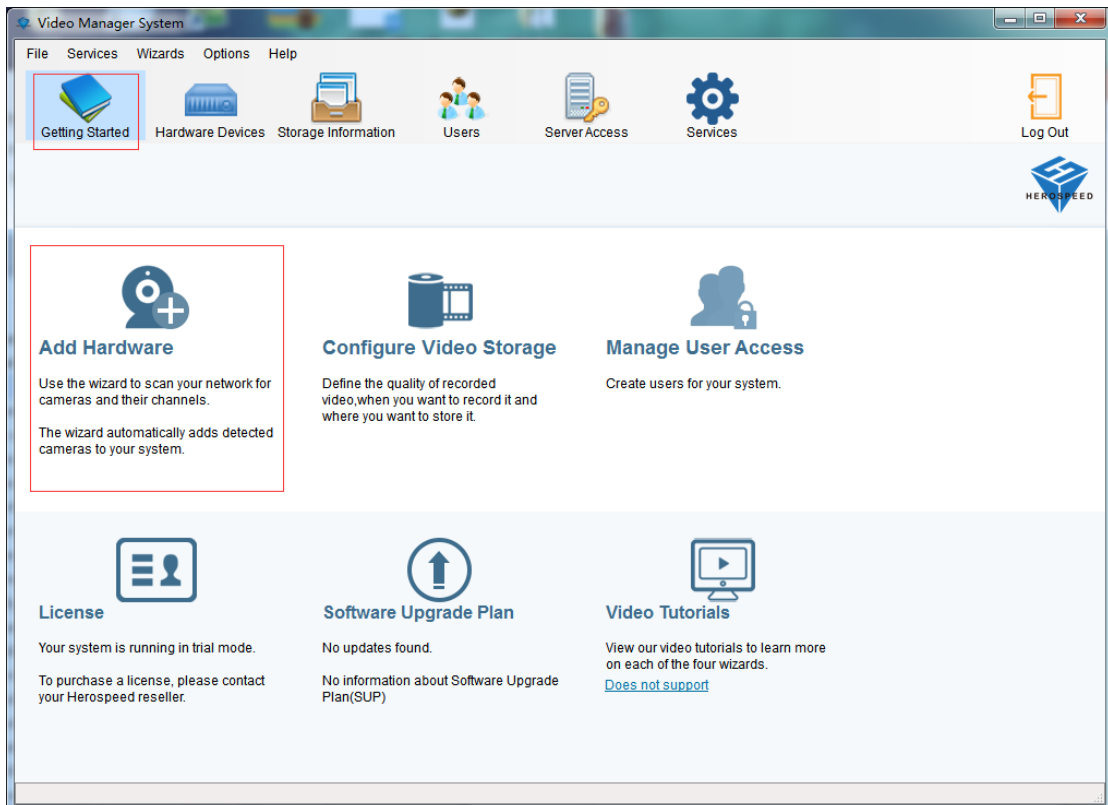
A dialog box titled 'Login to Management Application' with the Herospeed logo. The 'User name:' field is a dropdown menu showing '1'. Below it is a 'Password:' input field. There is a checked checkbox for 'Save Username' and two buttons: 'Login' and 'Cancel'.

Successful landing into the management end of the main VMS Management Interface

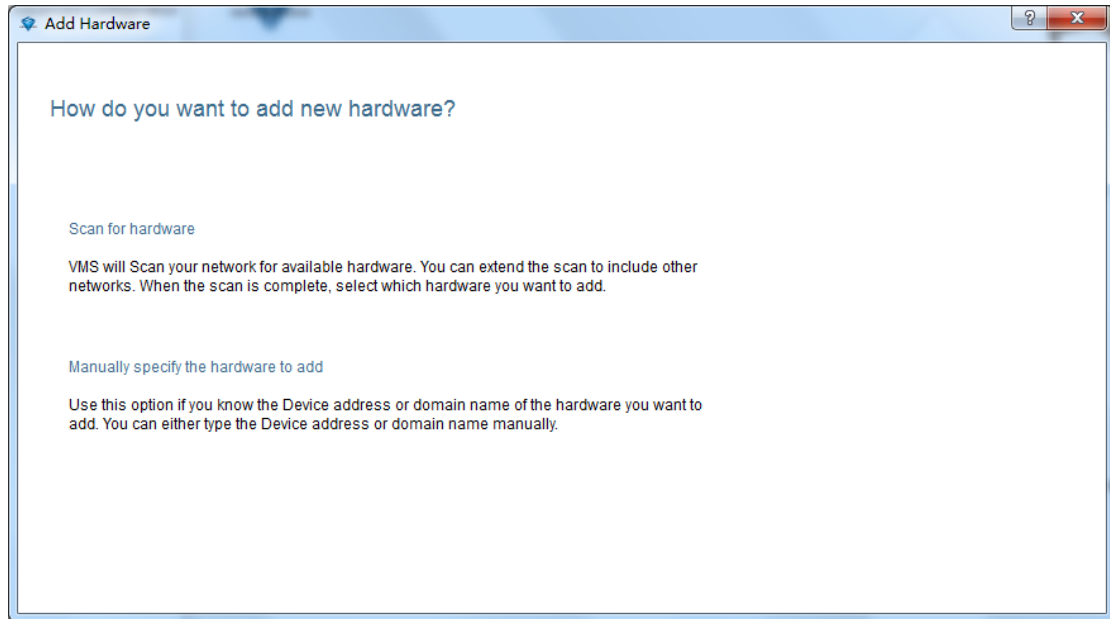


2.1.2 Adding a hardware device

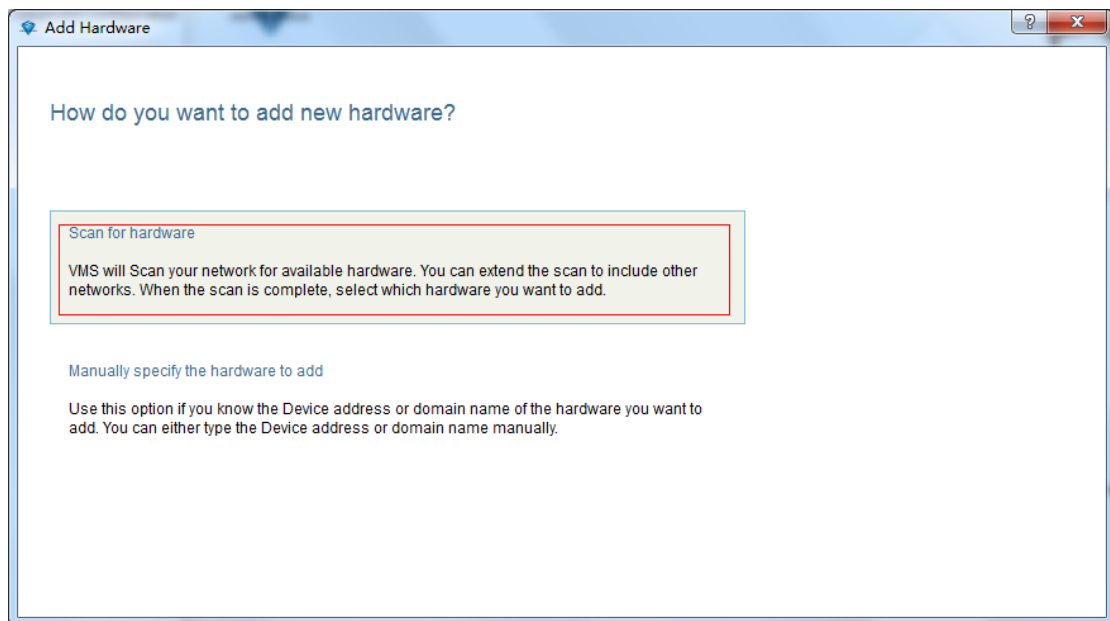
Click the entry, click Add Hardware



Pop-up dialog box to add add hardware, hardware scans can scan directly inside the LAN hardware device, you can also scan the specified network hardware; manually add the hardware is added directly to know the address or the serial number of hardware devices.

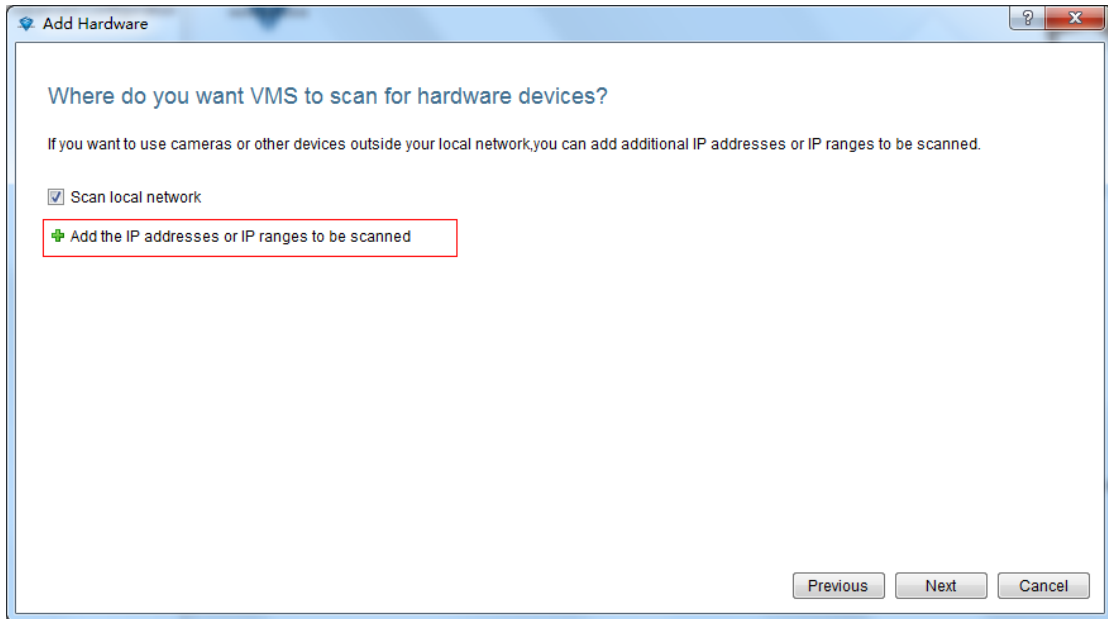


2.1.2.1 Adding scanning equipment



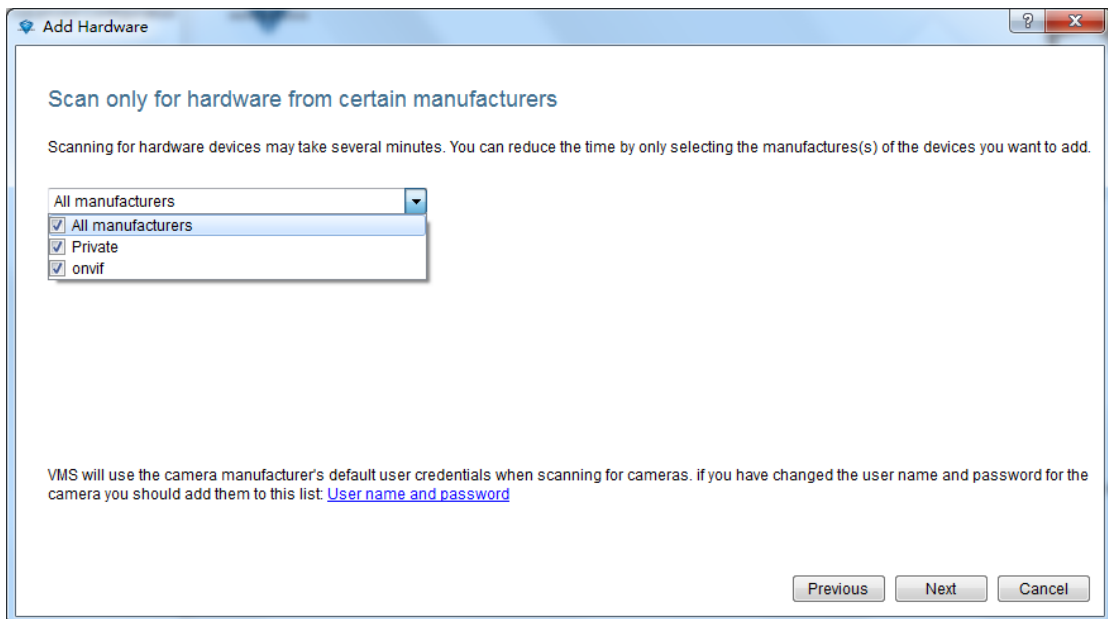
2.1.2.1.1 specified IP range scanning hardware

IP range can be set to filter search equipment, if you do not specify IP range can click Next to skip.



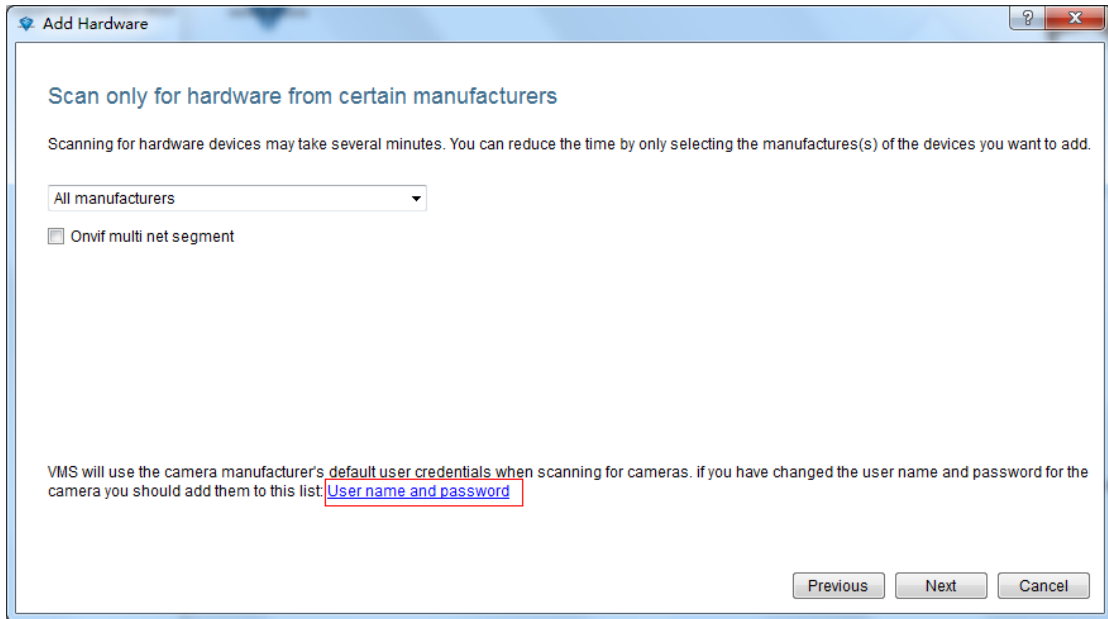
2.1.2.1.2 specify scanning hardware manufacturers

Can be set to search for equipment manufacturers, if you do not specify manufacturers can click Next to skip the default search All manufacturers

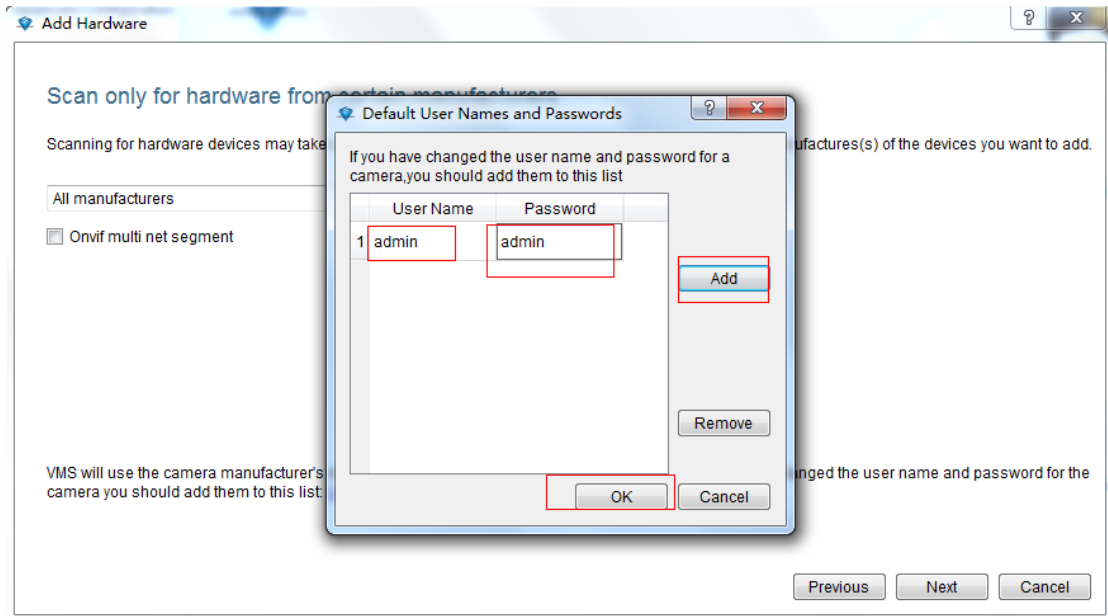


2.1.2.1.3 Configuring automatic verification

Add the default user name and password, and automatically verify scanned hardware devices (no need to configure automatic verification directly to the next step)

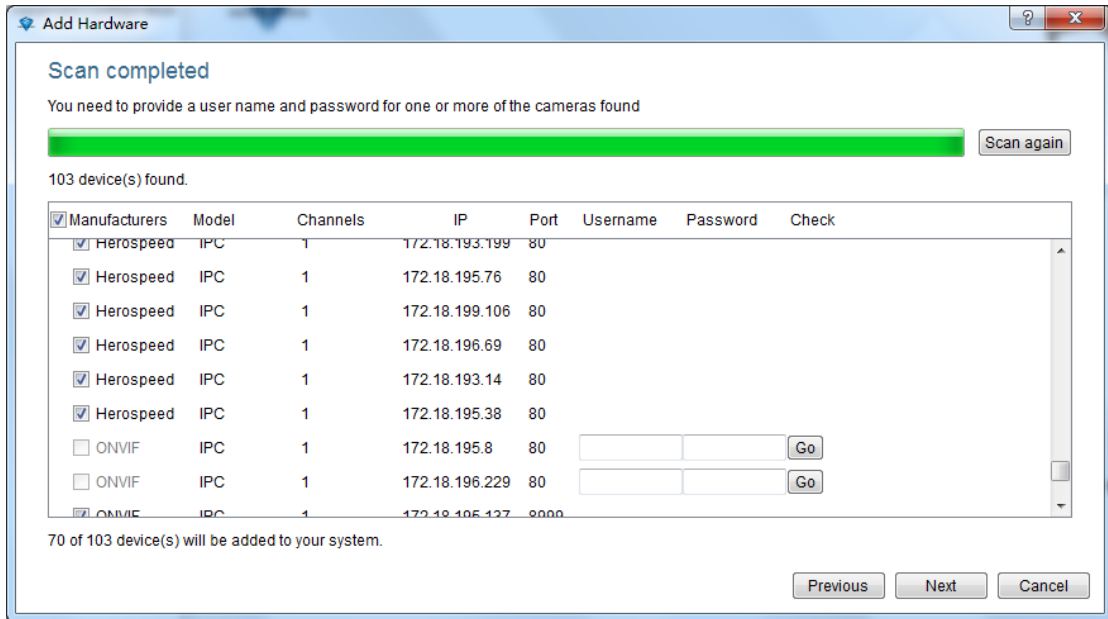


Pop-up dialog box to add a user name and password



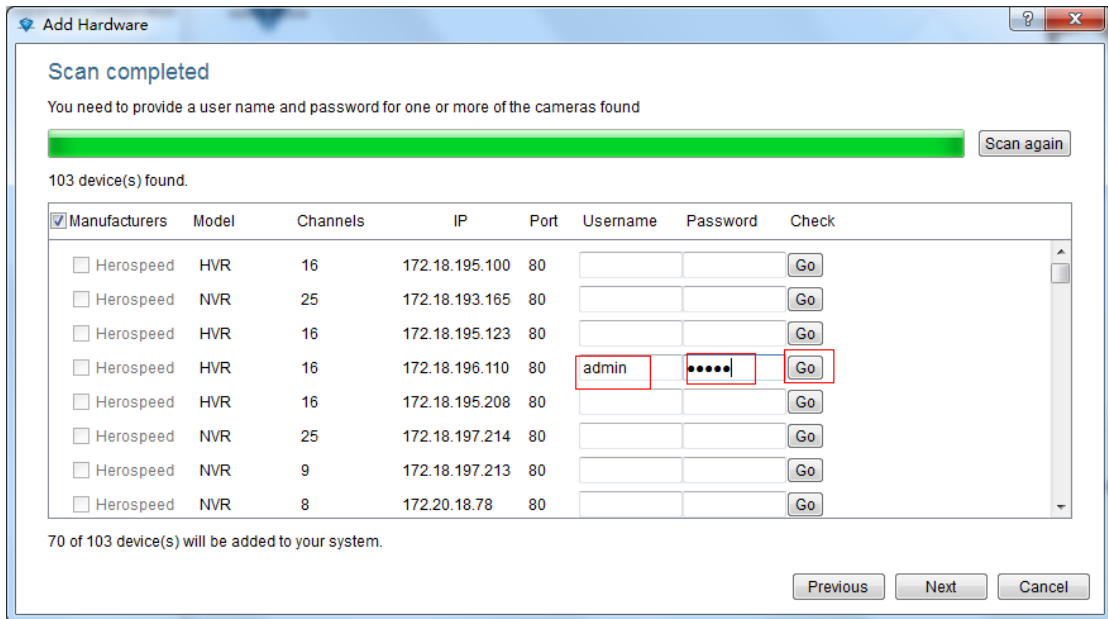
2.1.2.1.4 Start Depending on how the search appliance

Click Next.



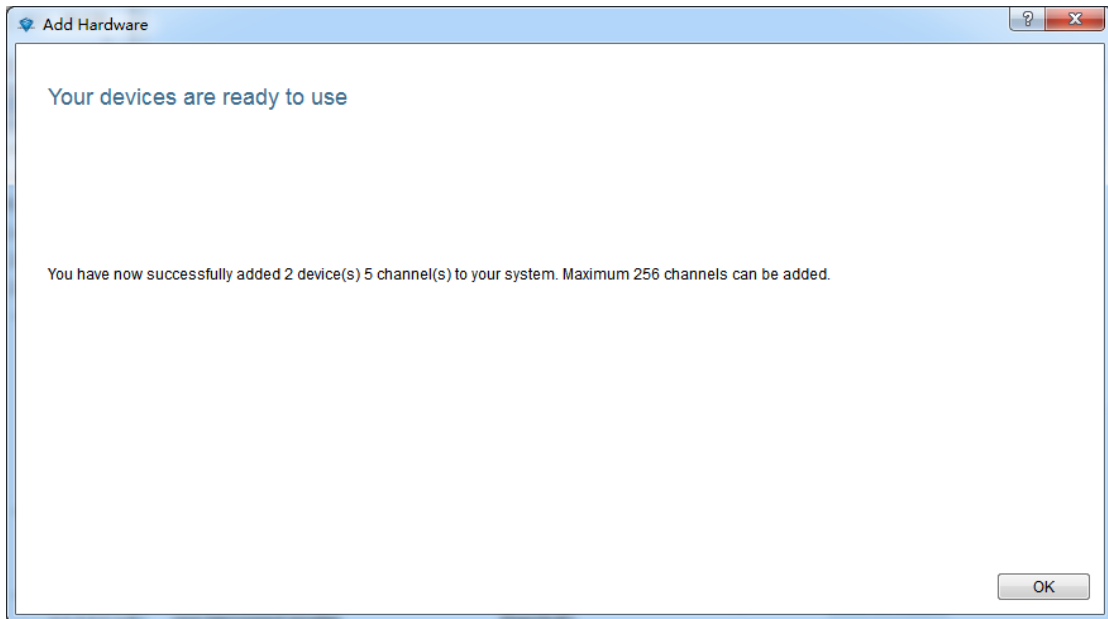
2.1.2.1.5 Manual Verification hardware

Hardware manually enter your username and password click Start



2.1.2.1.6 Completing the Add Hardware

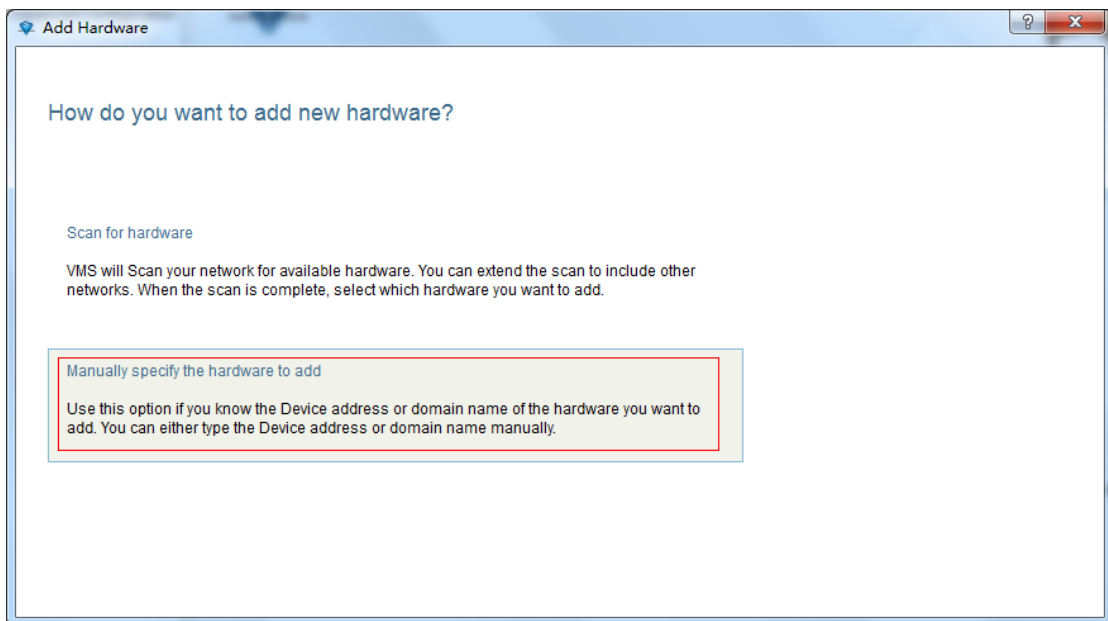
Select the desired device, then click Next to complete the search for new ways of equipment, software can add up to 256 channels



Notice:

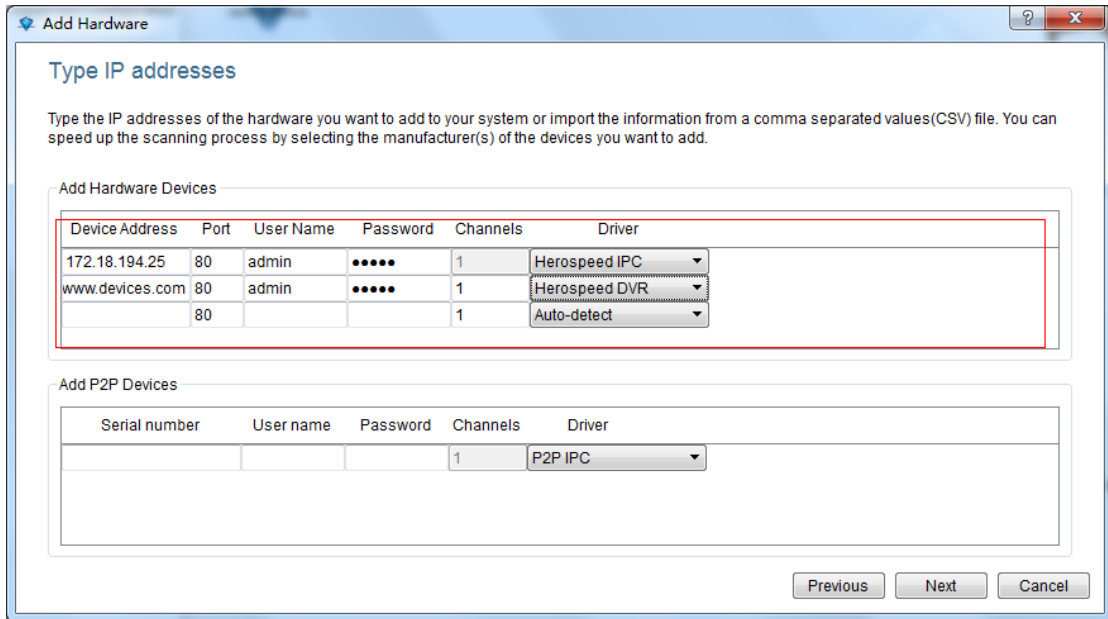
The fish-eye function is added when the driver selects the corresponding option when adding hardware.

2.1.2.2 Manually Add Device



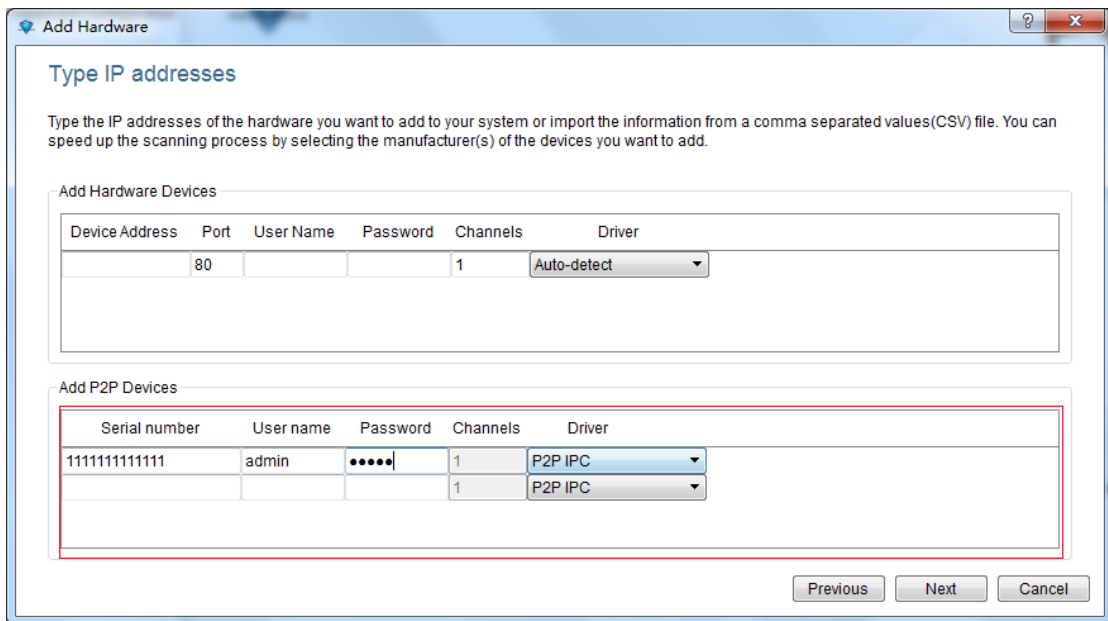
2.1.2.2.1 IP address is added hardware

Enter the IP or domain name, port number, user name, password, and the number of channels to choose the type of new equipment Driver

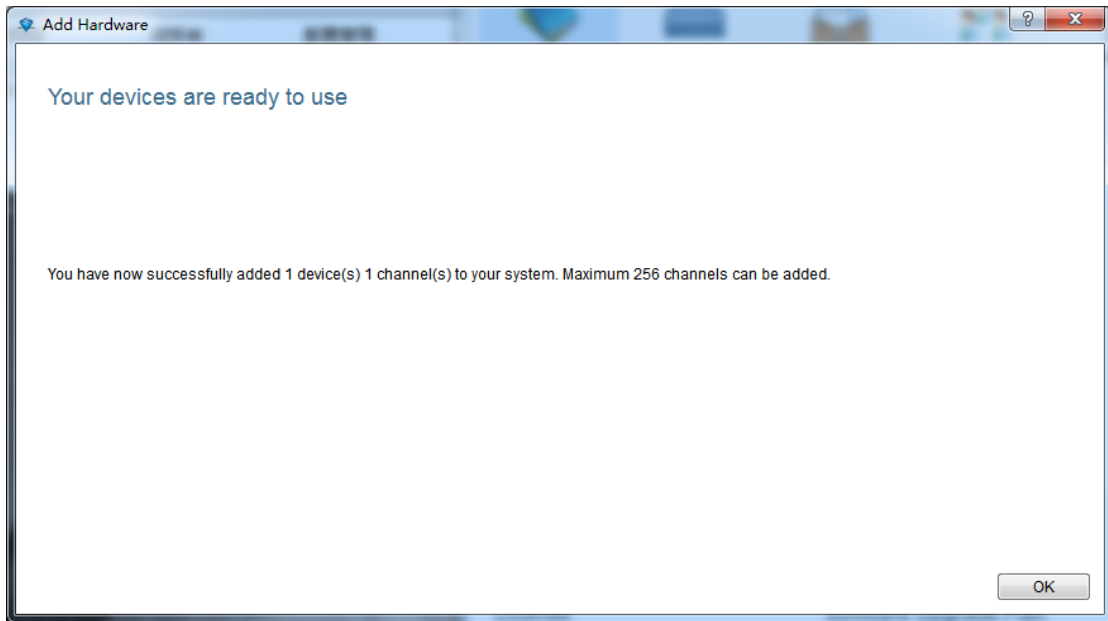


2.1.2.2.2 Adding hardware serial number

Input Devices SN code to add P2P device

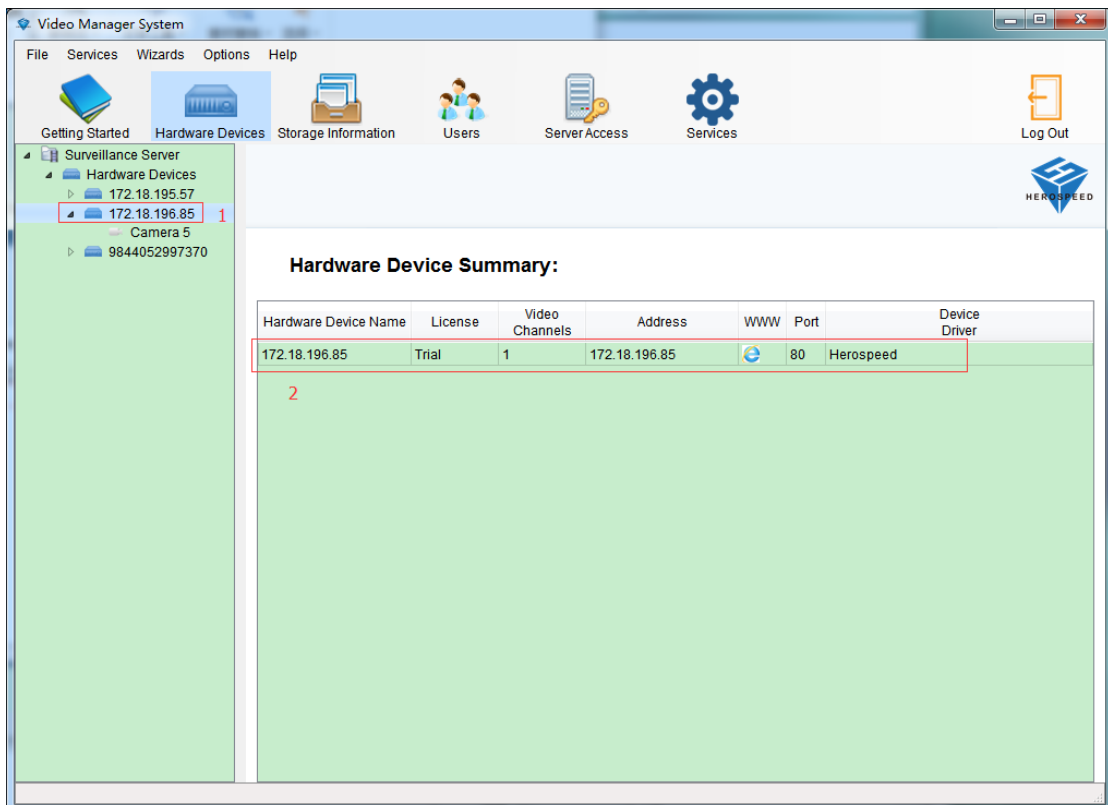


Completed manually add devices, software can add up to 256 channels.

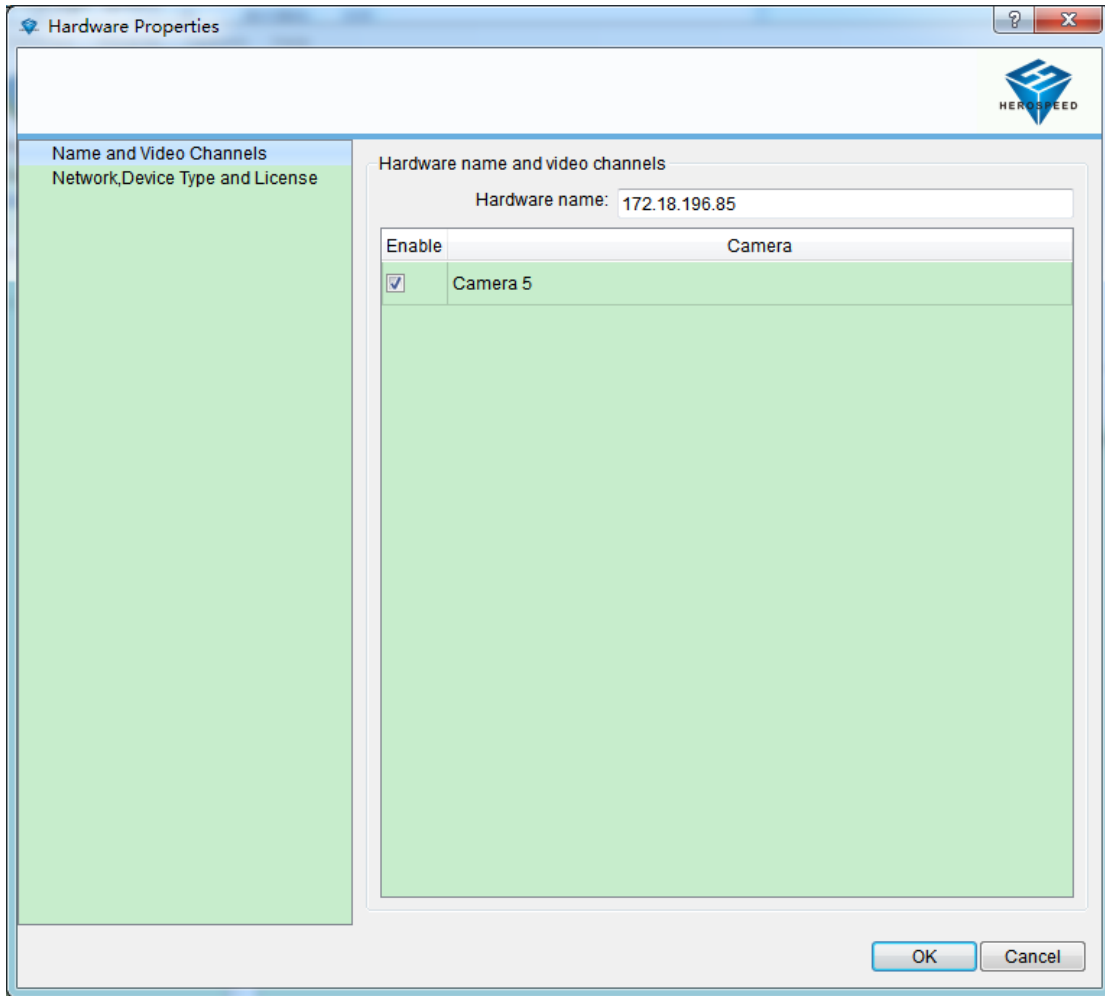


2.1.2.3 edit device properties

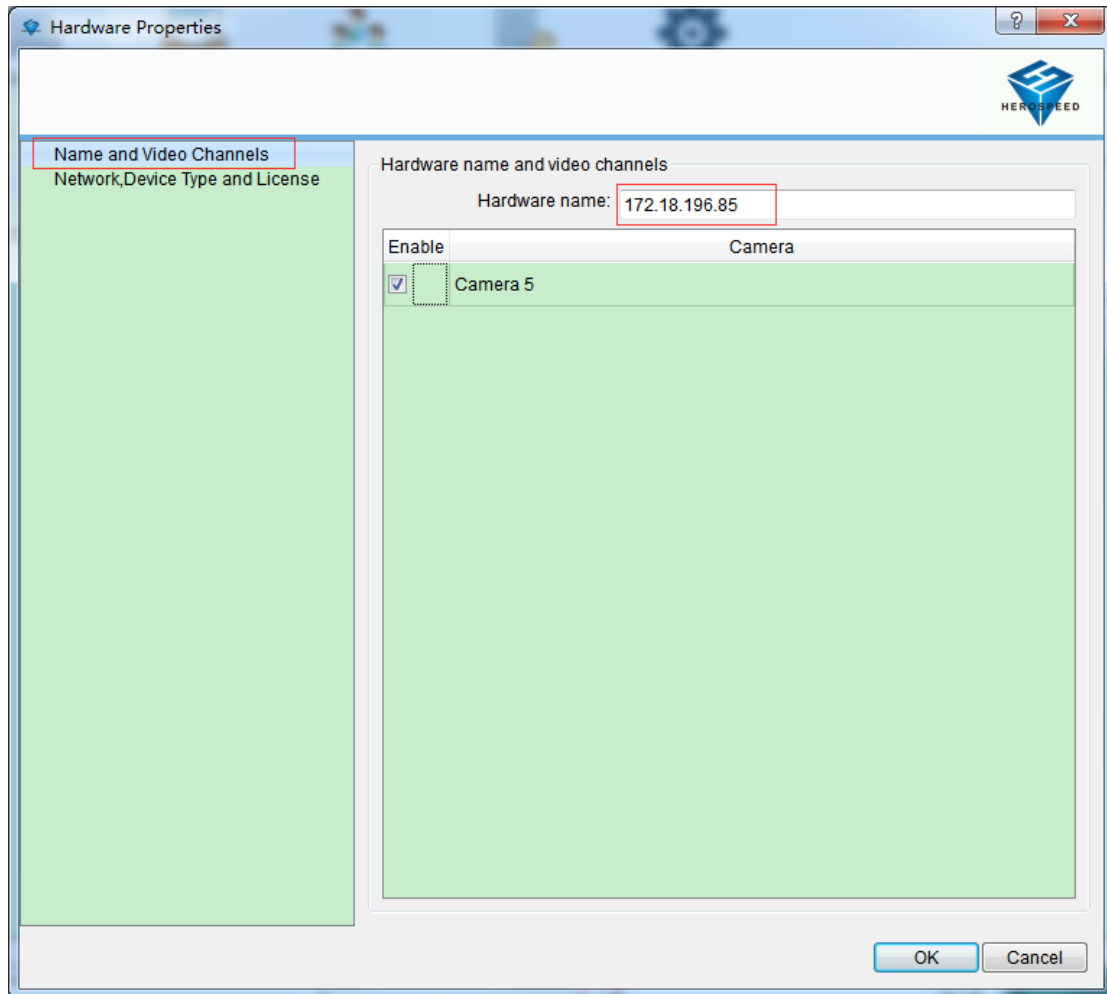
As shown below, click on the "1", double-click the "2"



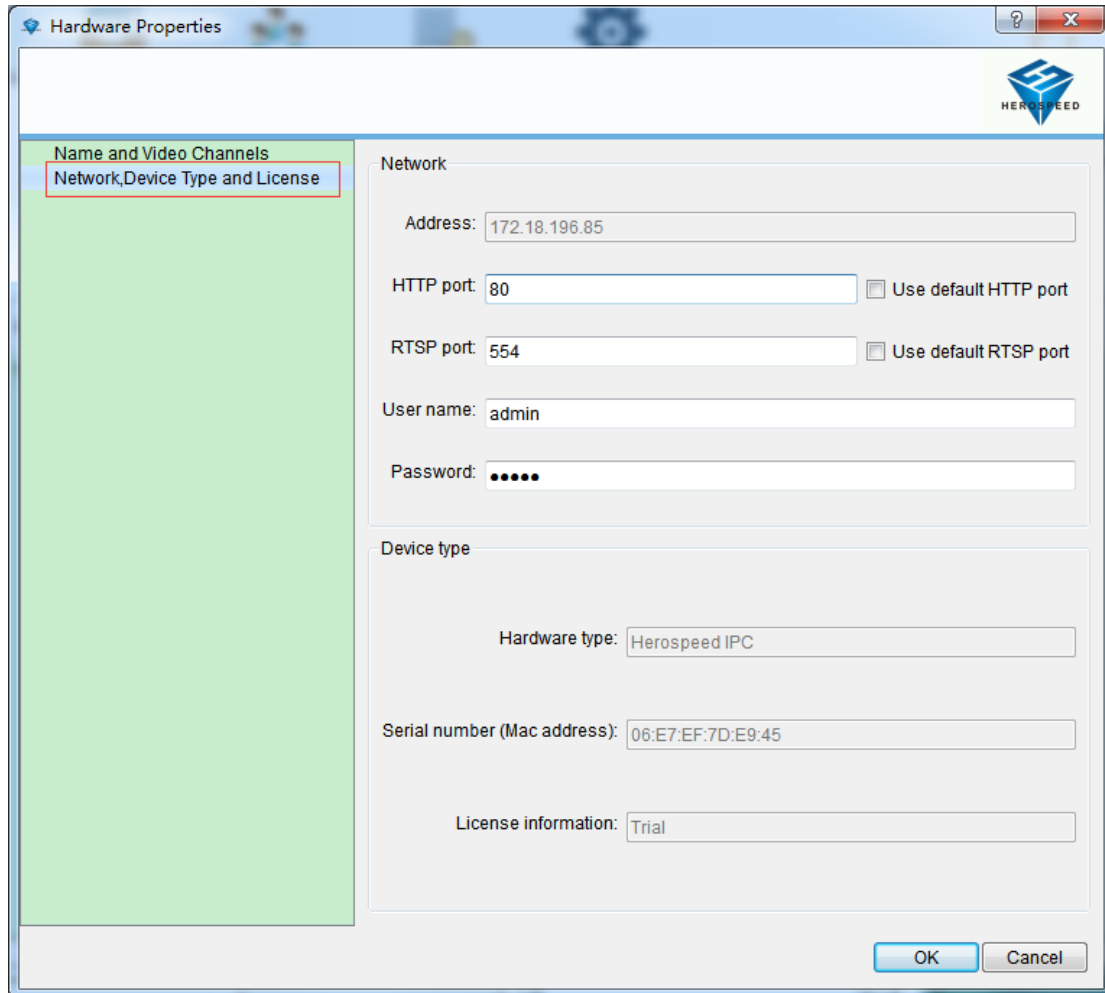
Eject Hardware Properties dialog box



2.1.2.3.1 modify the hardware device name

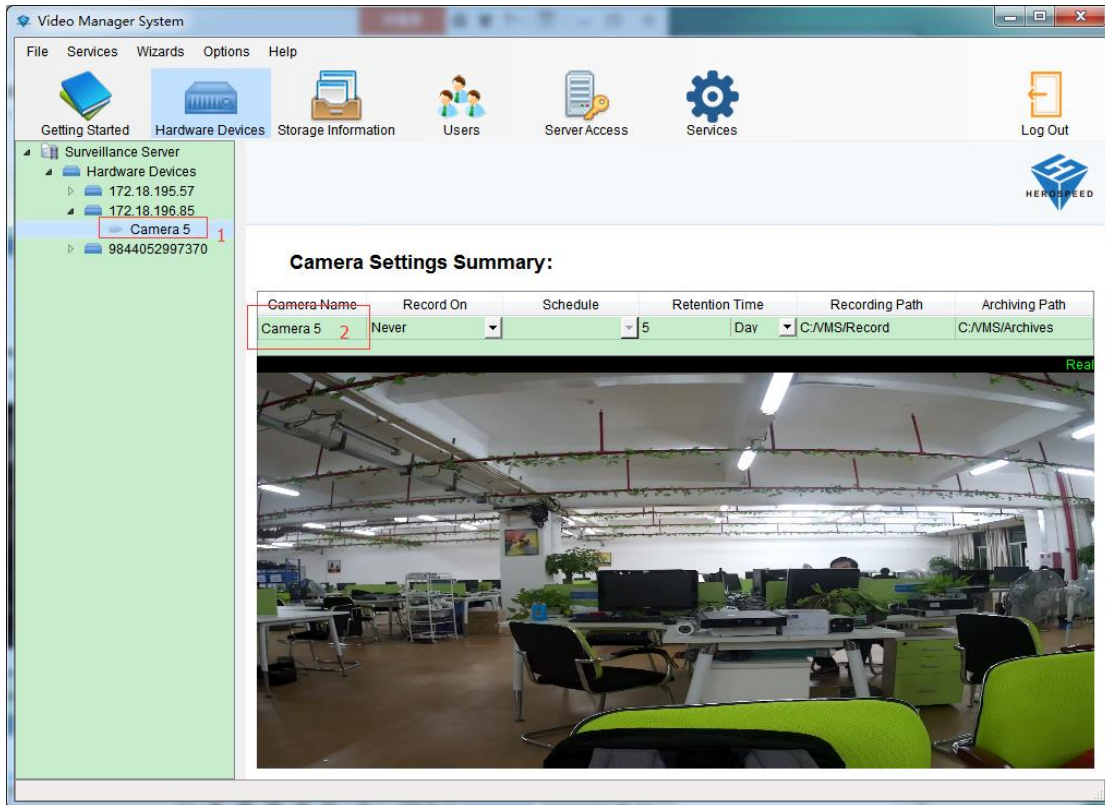


2.1.2.3.2 modify the hardware device port number, user name and password

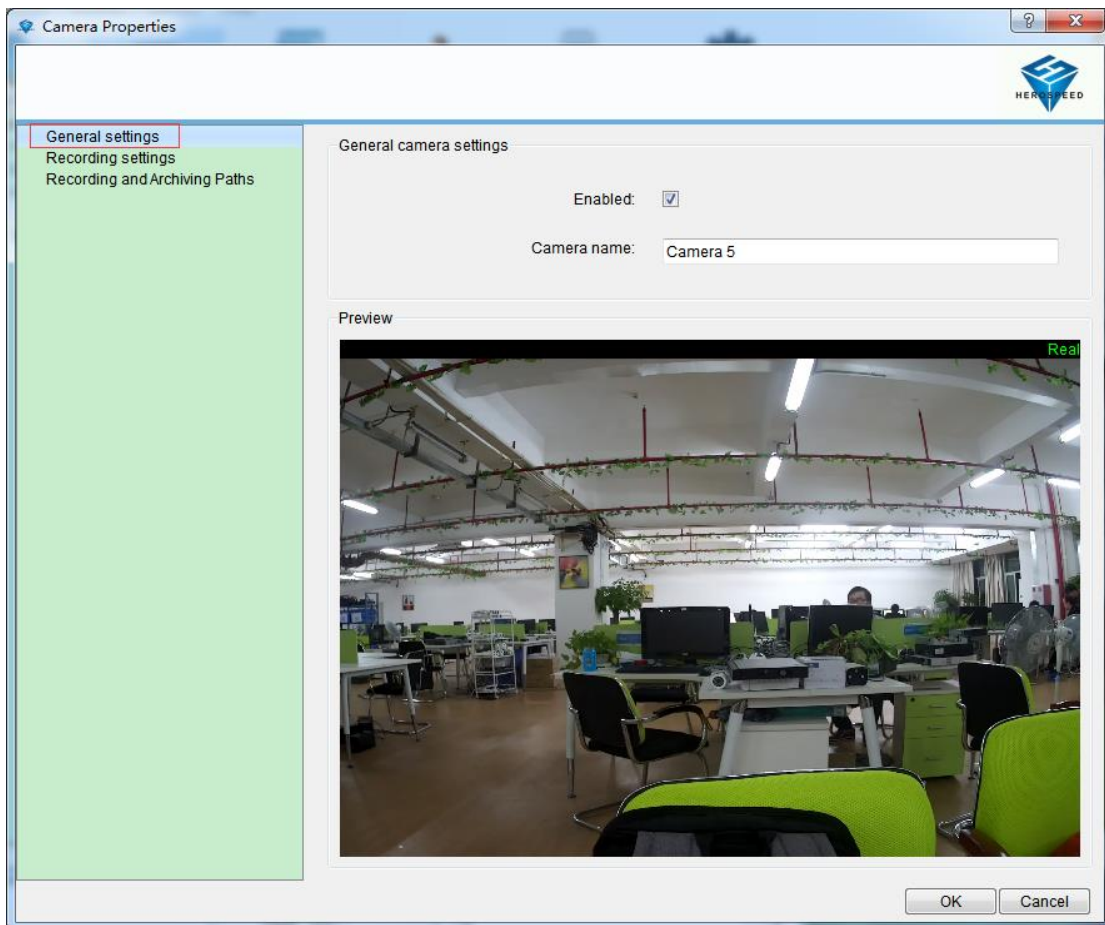


2.1.2.3.3 Modify the channel name

As shown below, click on the "1", double-click the "2".



Open the Properties dialog box to modify the camera



2.1.3 Storage Configuration

Displays storage configuration information for all devices

The screenshot shows the 'Video Manager System' interface. The 'Storage Information' section is active, displaying a 'Camera Summary' table and a 'Storage Usage Summary' table.

Camera Summary:

Camera Name	Record On	Schedule	Retention Time	Recording Path	Archiving Path
Camera 1	Never		5 Day	C:/MMS/Record	C:/MMS/Archives
Camera 2	Never		5 Day	C:/MMS/Record	C:/MMS/Archives
Camera 3	Never		5 Day	C:/MMS/Record	C:/MMS/Archives
Camera 4	Never		5 Day	C:/MMS/Record	C:/MMS/Archives
Camera 5	Never		5 Day	C:/MMS/Record	C:/MMS/Archives
Camera 6	Never		5 Day	C:/MMS/Record	C:/MMS/Archives

Storage Usage Summary:

Drive	Path	Drive Size	Other Data	Free Space
C:/	C:/	48 GB	46 GB	2 GB
D:/	D:/	195 GB	126 GB	69 GB
E:/	E:/	221 GB	131 GB	90 GB
G:/	G:/	0 GB	0 GB	0 GB

Legend: Free space (green), Other space (red). A pie chart shows the storage usage for the selected drive (C:/), with a very small green slice representing free space and a large red slice representing other space. The 'Archiving Times' section shows a time of 19:29:49 and buttons for 'Add' and 'Delete'.

There are 0 channels has been configured to store information

Channel storage configuration editor, double-click to the right of the list box into the recording and storage properties, you can only give one camera configuration can also use templates to configure multiple cameras, (using the template configuration see 2.1.3.3).

Video Manager System

File Services Wizards Options Help

Getting Started Hardware Devices Storage Information Users Server Access Services Log Out

Surveillance Server

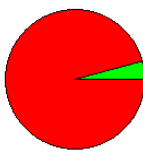
- Storage Information
 - Camera 1
 - Camera 2
 - Camera 3
 - Camera 4
 - Camera 5
 - Camera 6

Camera Summary:

Camera Name	Record On	Schedule	Retention Time	Recording Path	Archiving Path
Camera 1	Never		5 Day	C:/VMS/Record	C:/VMS/Archives
Camera 2	Never		5 Day	C:/VMS/Record	C:/VMS/Archives
Camera 3	Never		5 Day	C:/VMS/Record	C:/VMS/Archives
Camera 4	Never		5 Day	C:/VMS/Record	C:/VMS/Archives
Camera 5	Never		5 Day	C:/VMS/Record	C:/VMS/Archives
Camera 6	Never		5 Day	C:/VMS/Record	C:/VMS/Archives

Storage Usage Summary:

Drive	Path	Drive Size	Other Data	Free Space
C:/	C:/	48 GB	46 GB	2 GB
D:/	D:/	195 GB	126 GB	69 GB
E:/	E:/	221 GB	131 GB	90 GB
G:/	G:/	0 GB	0 GB	0 GB

Legend: 

Archiving Times: 19:29:49

Add Delete

There are 0 channels has been configured to store information

2.1.3.1 configure the storage path, stream type, retention time

Recording and Storage Properties

Recording and Archiving Paths

Video Recording

Storage Information

Recording

Template

Template->	Recording Path	Archiving Path	Recording stream	Retention Time
	C:/VMS/Record	C:/VMS/Archives	Main stream	5 Day

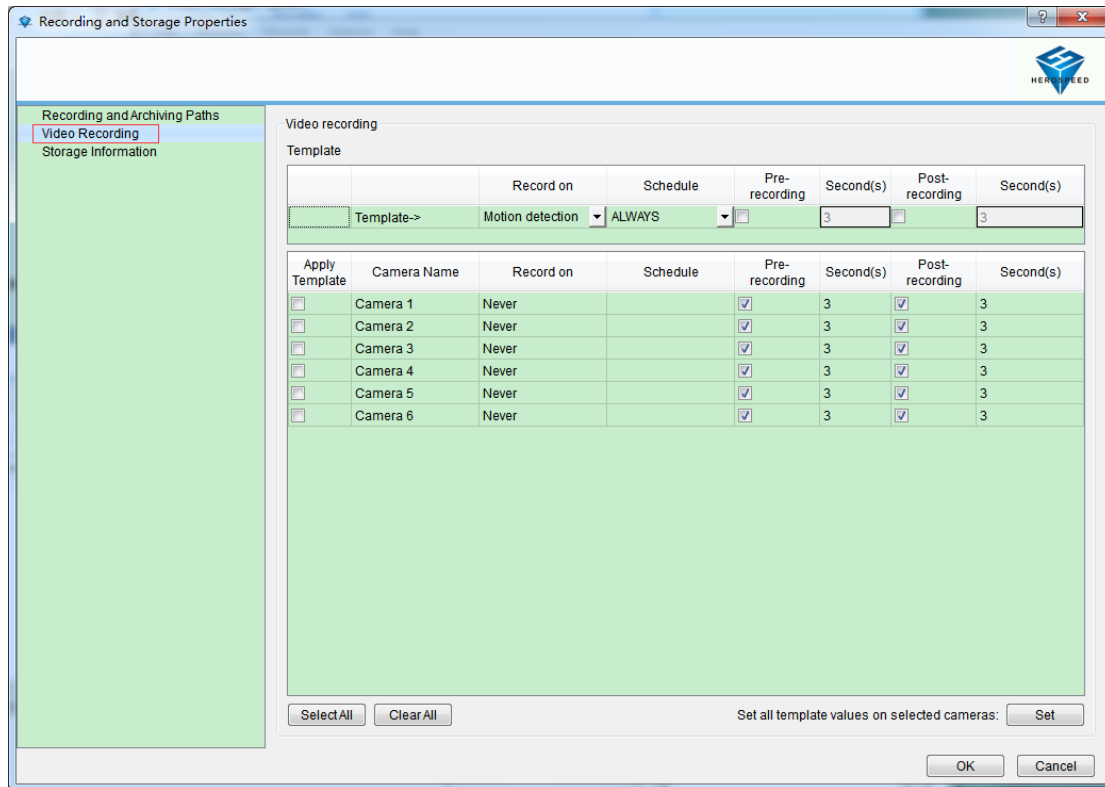
Apply Template	Camera	Recording Path	Archiving Path	Recording stream	Retention Time
<input type="checkbox"/>	Camera 1	C:/VMS/Record	C:/VMS/Archives	Main stream	5 Day
<input checked="" type="checkbox"/>	Camera 2	C:/VMS/Record	C:/VMS/Archives	Main stream	5 Day
<input type="checkbox"/>	Camera 3	C:/VMS/Record	C:/VMS/Archives	Main stream	5 Day
<input type="checkbox"/>	Camera 4	C:/VMS/Record	C:/VMS/Archives	Main stream	5 Day
<input type="checkbox"/>	Camera 5	C:/VMS/Record	C:/VMS/Archives	Main stream	5 Day
<input type="checkbox"/>	Camera 6	C:/VMS/Record	C:/VMS/Archives	Main stream	5 Day

Select All Clear All

Set all template values on selected cameras: Set

OK Cancel

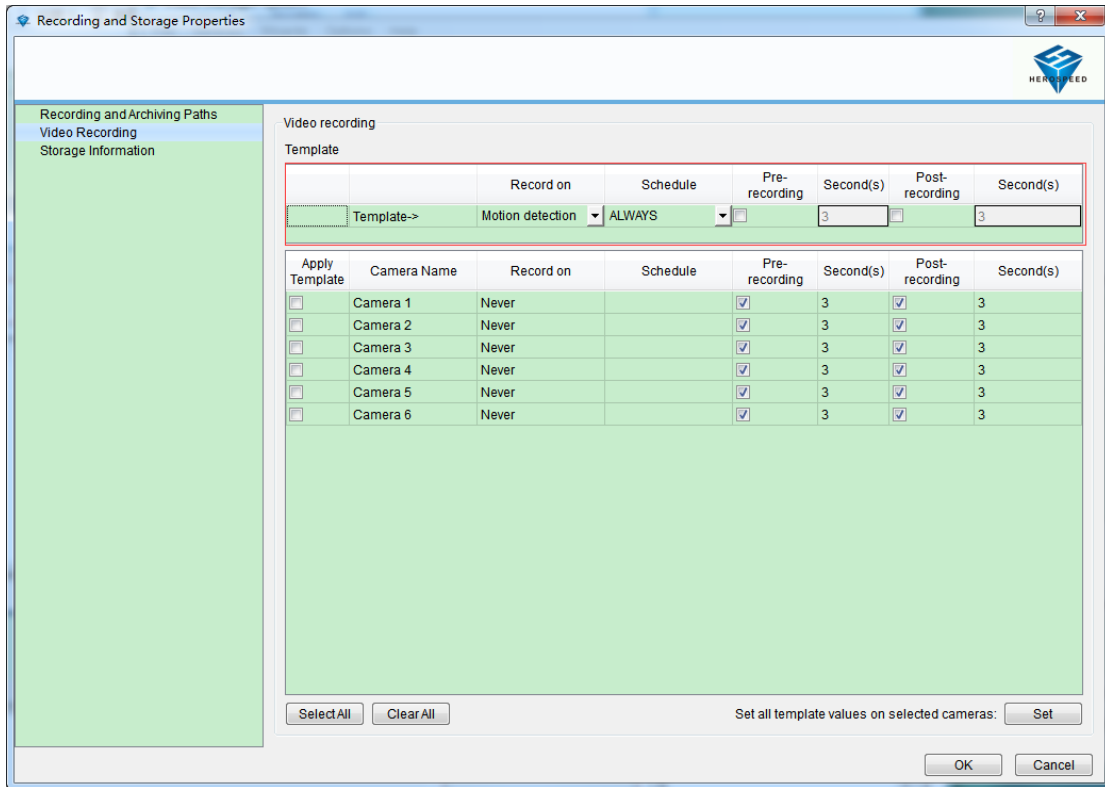
2.1.3.2 configure the recording type, time change



2.1.3.3 Configuration Template

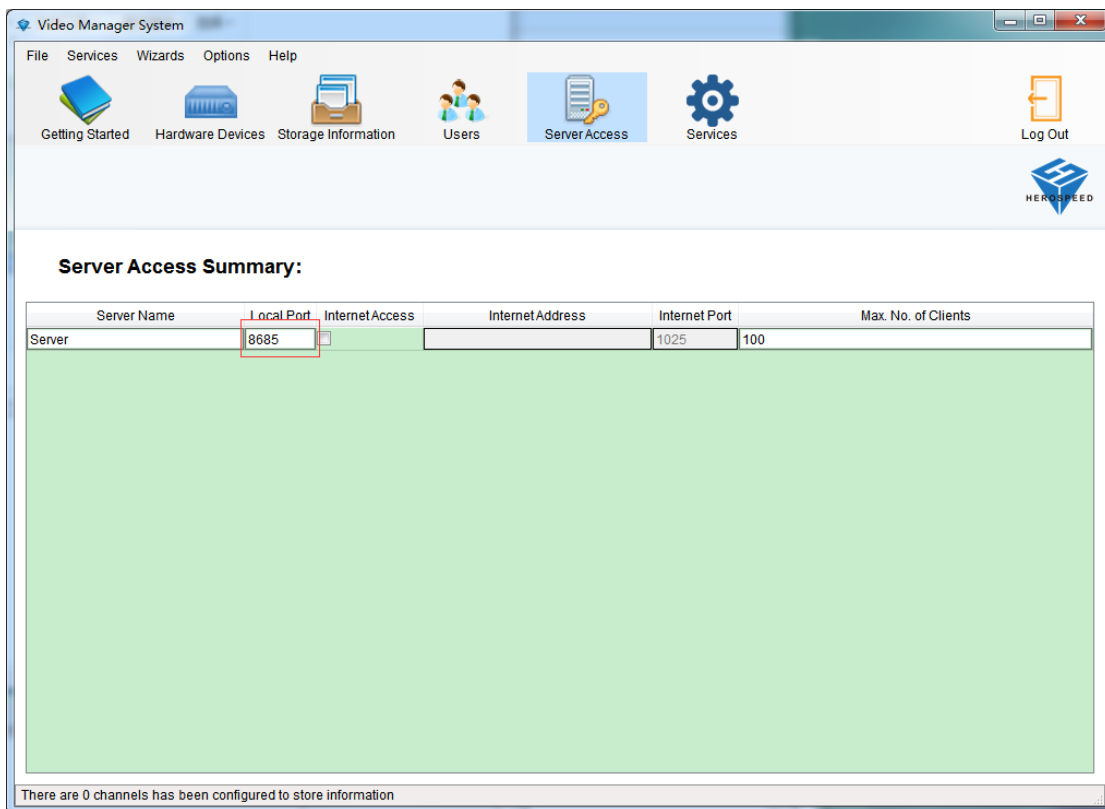
As shown below:

- 1> Edit Template
- 2> Select the template you want to apply the camera
- 3> settings to the camera



2.1.4 Server Access

The port number set the local VMS SmartClient for landing



2.1.5 User Management

2.1.5.1 Edit User Information

Users list management, open the User List window

Add New Users

Add users
choose "Basic Users",it can be used for client login"
choose "Administrator Users",it can be used for landing and configuration management"

Add user

User name:

Password:

Confirm Password:

Administrator Users Basic Users

User name	Editor	Delete
1	Editor	Delete

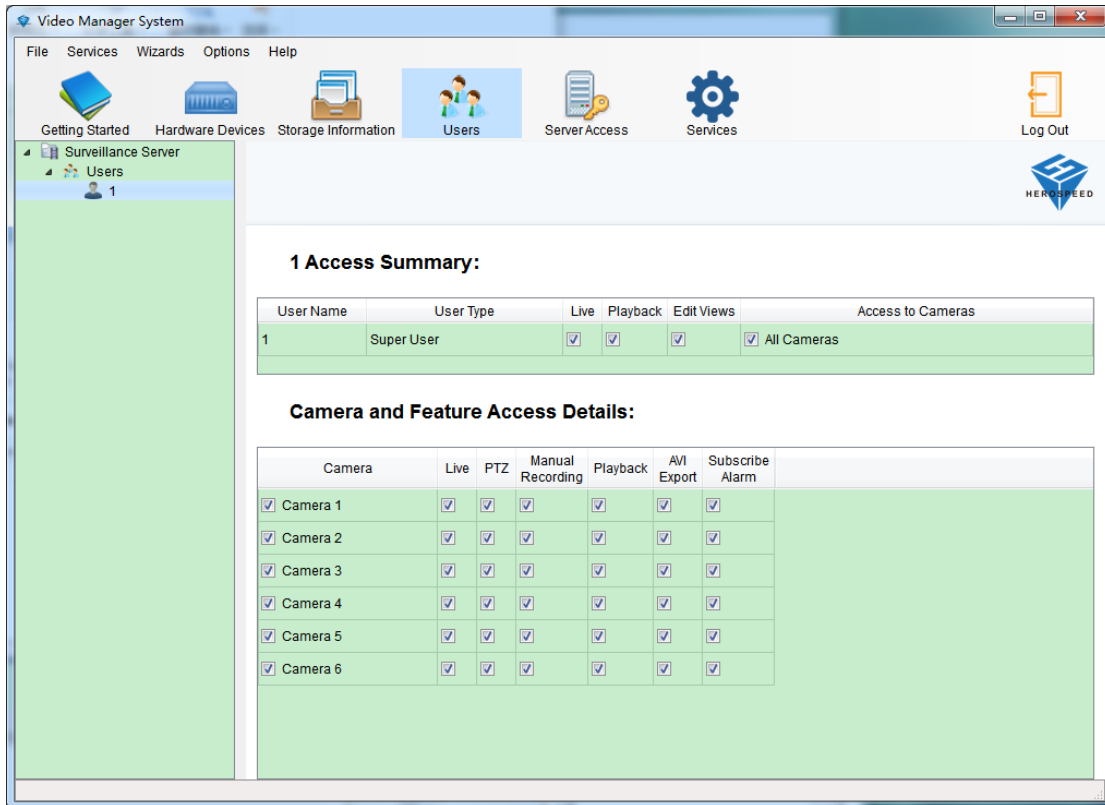
Users can be added in the window, modify users, delete users.

When new users can choose two types of users,

- 1: Administrator user (VMS Management can be used for landing and landing VMS SmartClient),
- 2: normal user (used only for landing VMS SmartClient).

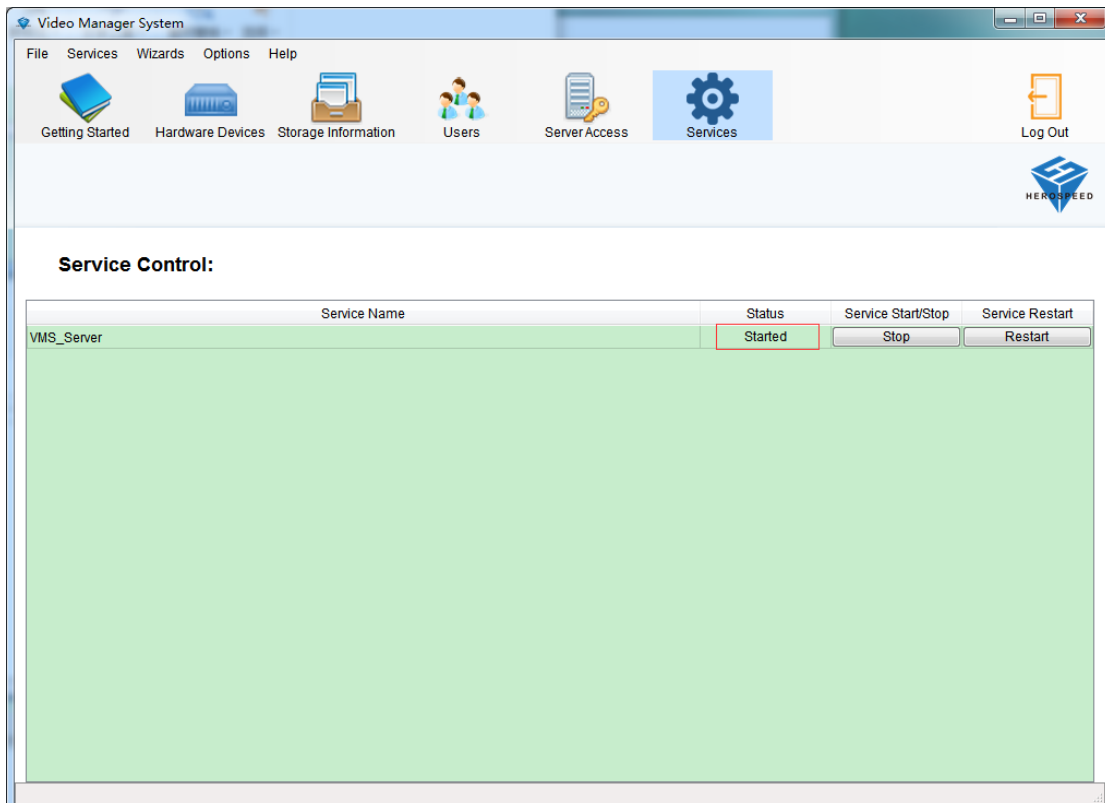
2.1.5.2 Edit User Permissions

You can set permissions and equipment VMS SmartClient on the channel to the specified user



2.1.6 Service

Background VMS Server Control Program



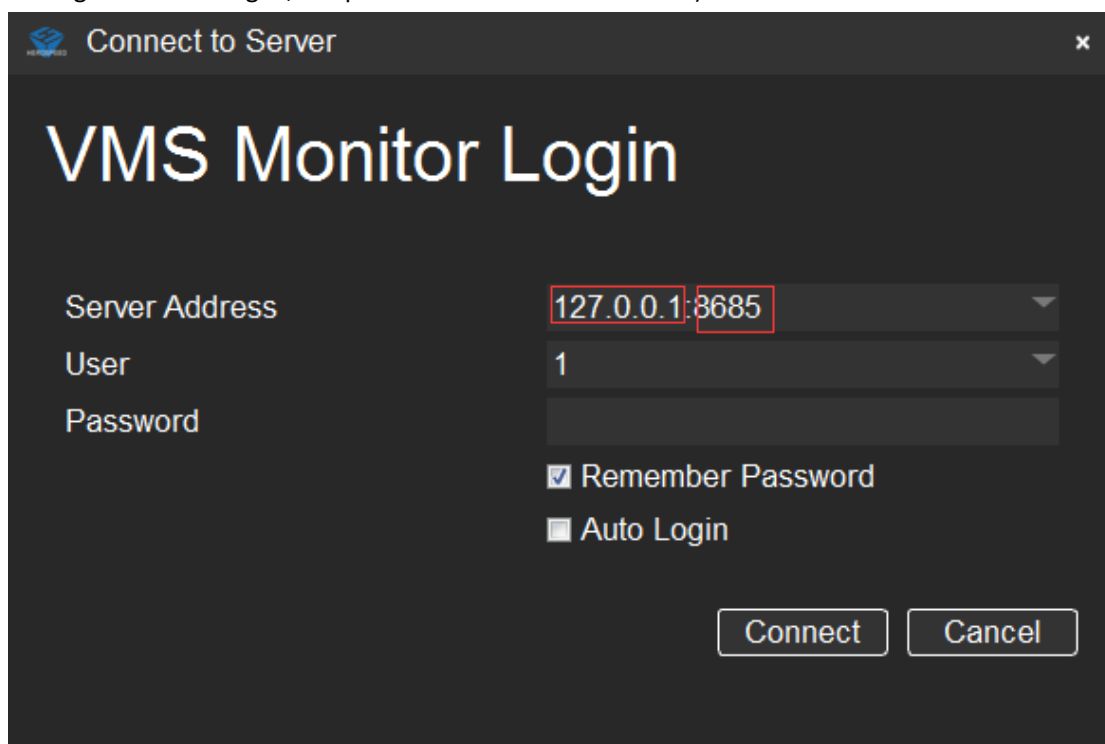
VMS Server can control the use of state, only to be turned back at the video store, VMS SmartClient client to normal use.

2.2 client and operating instructions

After VMS Management configuration is complete, you can use VMS SmartClient video preview and playback clients, VMS SmartClient with VMS Management can be installed on the same machine can also be individually installed on the other machine.

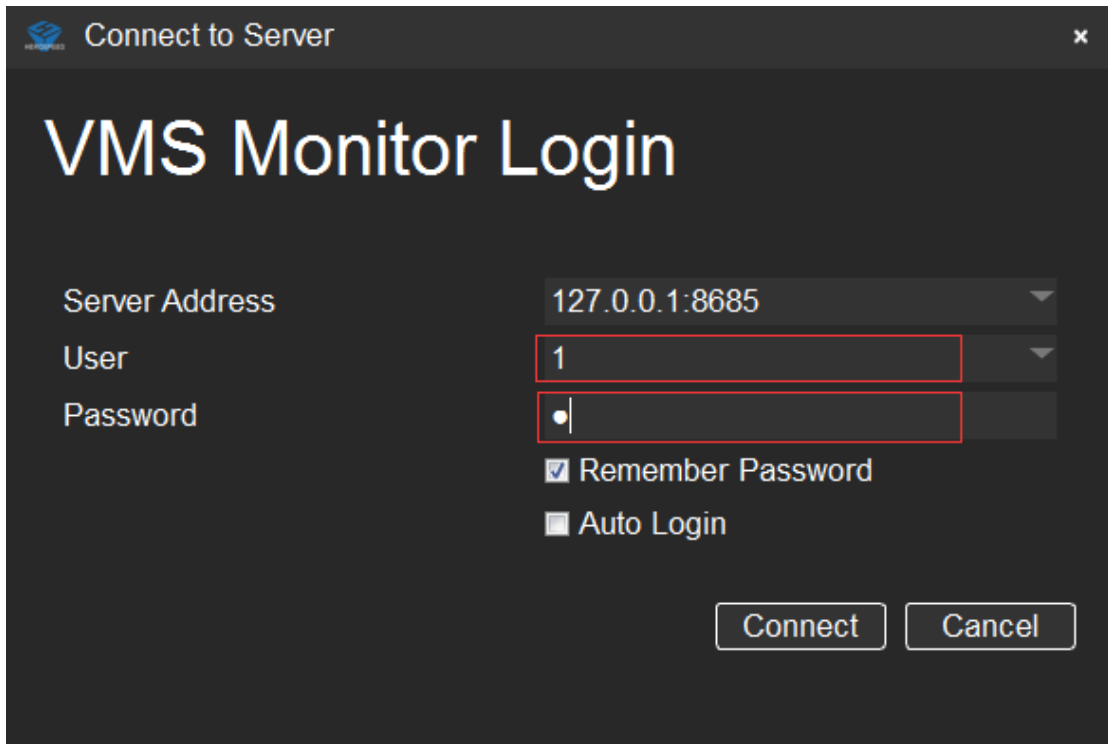
2.2.1 Login

Enter VMS Management machine where IP and port number (if it is installed on the same machine, IP is 127.0.0.1, port number 80 by default, when the server access ports on VMS Management is changed, the port number to use consistent).



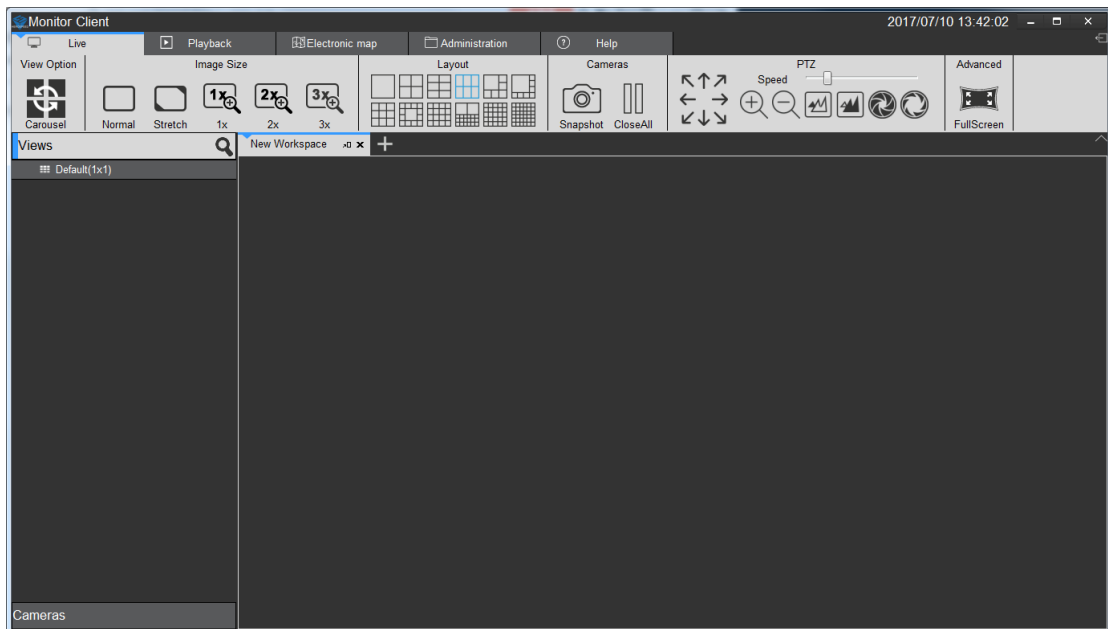
The screenshot shows a dark-themed dialog box titled "Connect to Server" with a close button in the top right corner. The main heading is "VMS Monitor Login". There are three input fields: "Server Address" containing "127.0.0.1:8685", "User" containing "1", and "Password" which is empty. Below these fields are two checkboxes: "Remember Password" (checked) and "Auto Login" (unchecked). At the bottom right, there are two buttons: "Connect" and "Cancel".

On VMS Management user to create login authentication

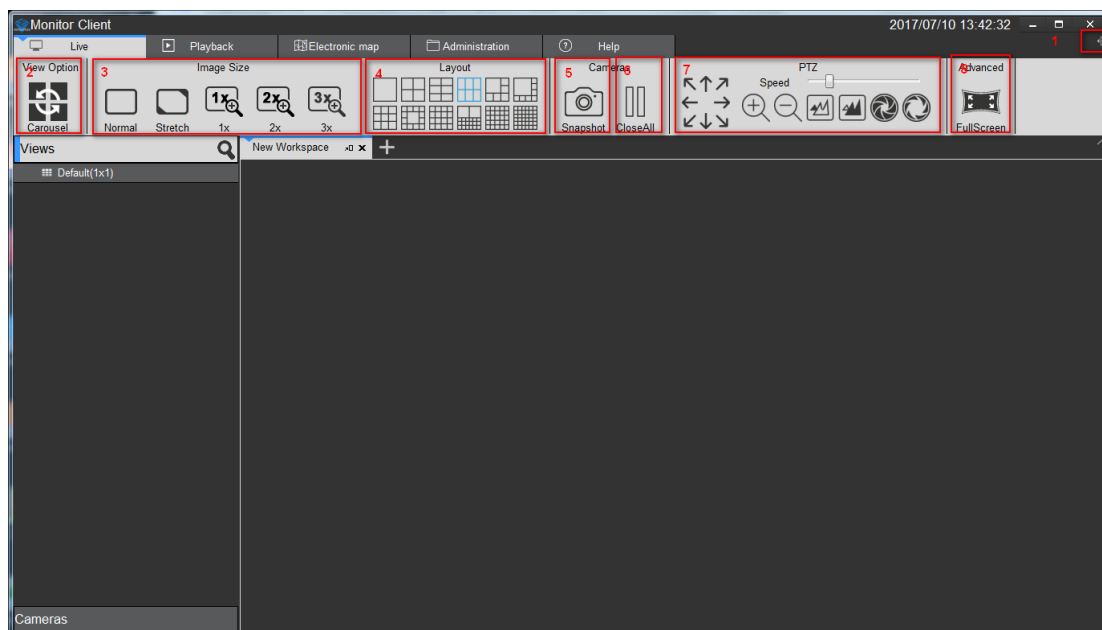


2.2.2 Live Preview

Live Preview Interface



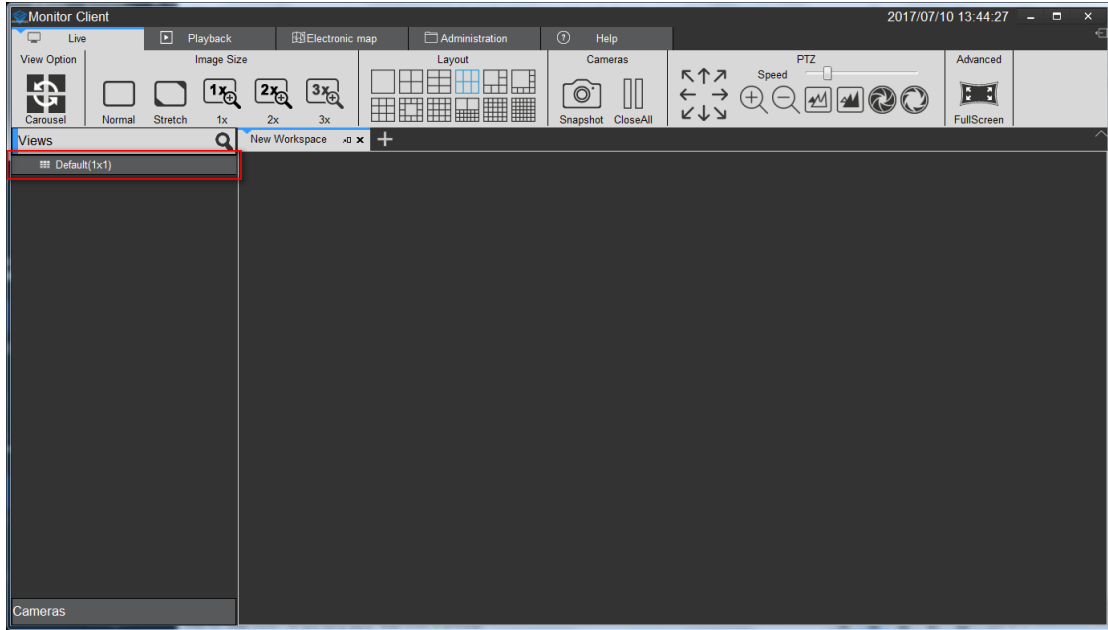
2.2.2.1 Live Preview Features



- 1) Logout: Exit the current user to return to the login screen.
- 2) View round robin: All round robin round robin set up view
- 3) Image size:
 - a. routine: The image is displayed in real scale.
 - b. Stretch: The image is displayed in the window size.
 - c. 1 times: the image is not scaled.
 - d. 2 times: 2 times image to enlarge.
 - e. 3 times: 3 times image to enlarge.
- 4) View: Select the type of layout view window.
- 5) Snapshot: snapshot picture of the current window.
- 6) Close the current camera video.
- 7) PTZ control (only enabled devices that support PTZ control is effective).
- 8) Full Screen: Full-screen view.

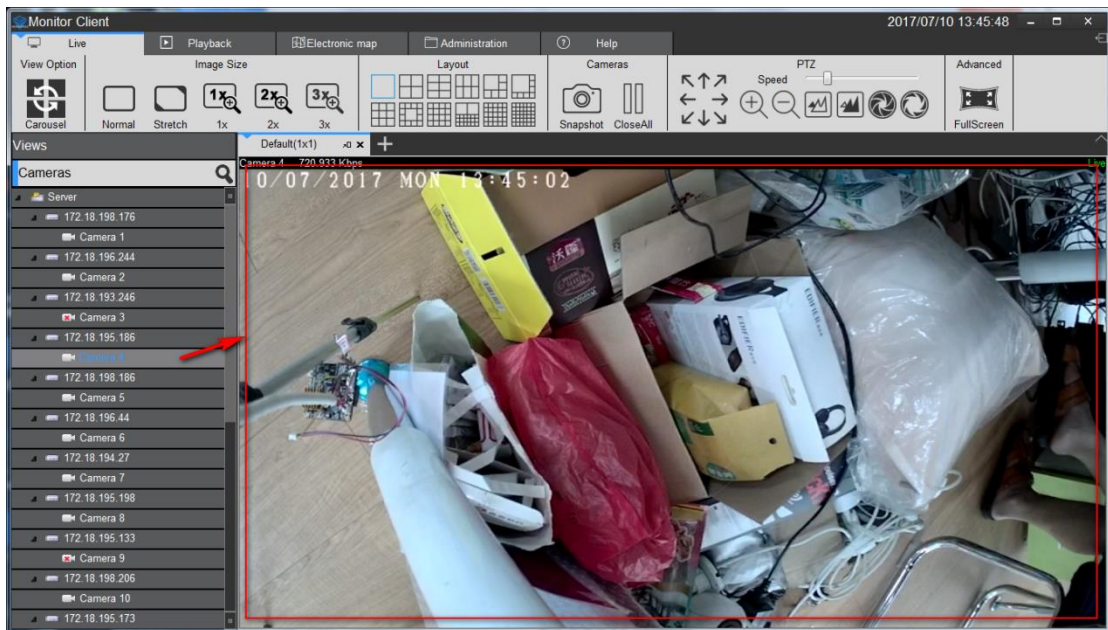
2.2.2.2 View switching video

User set a good view layouts to quickly switch view preview video.



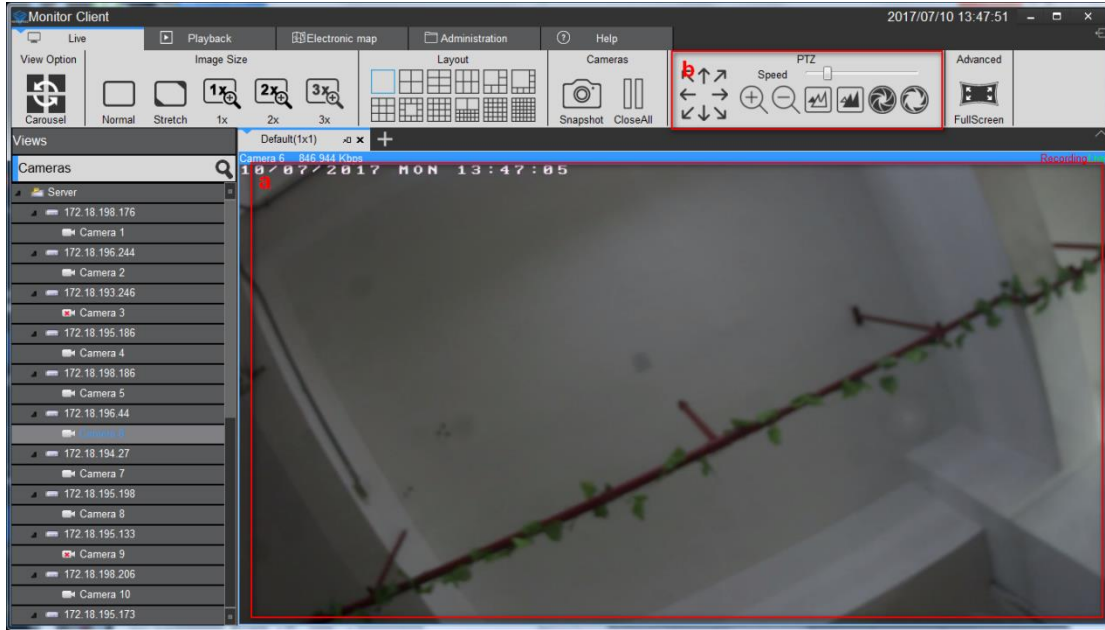
2.2.2.3 Select a camera preview video

Select the camera onto the specified window preview video.



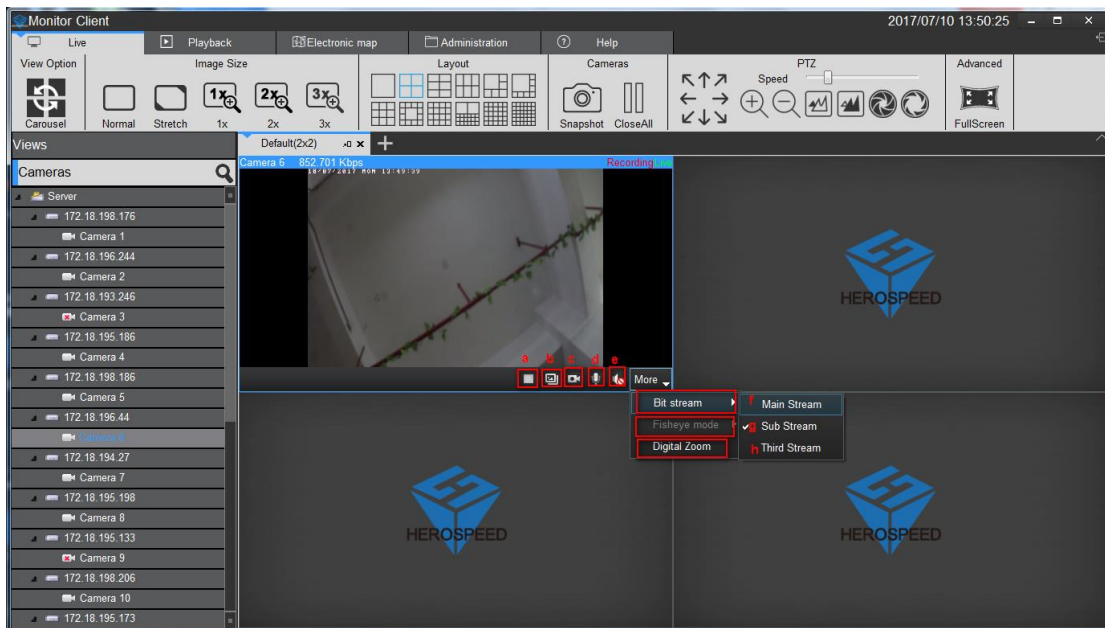
2.2.2.4 PTZ control

- a. Select the required PTZ control window.
- b. In the PTZ console window for the selected PTZ control.



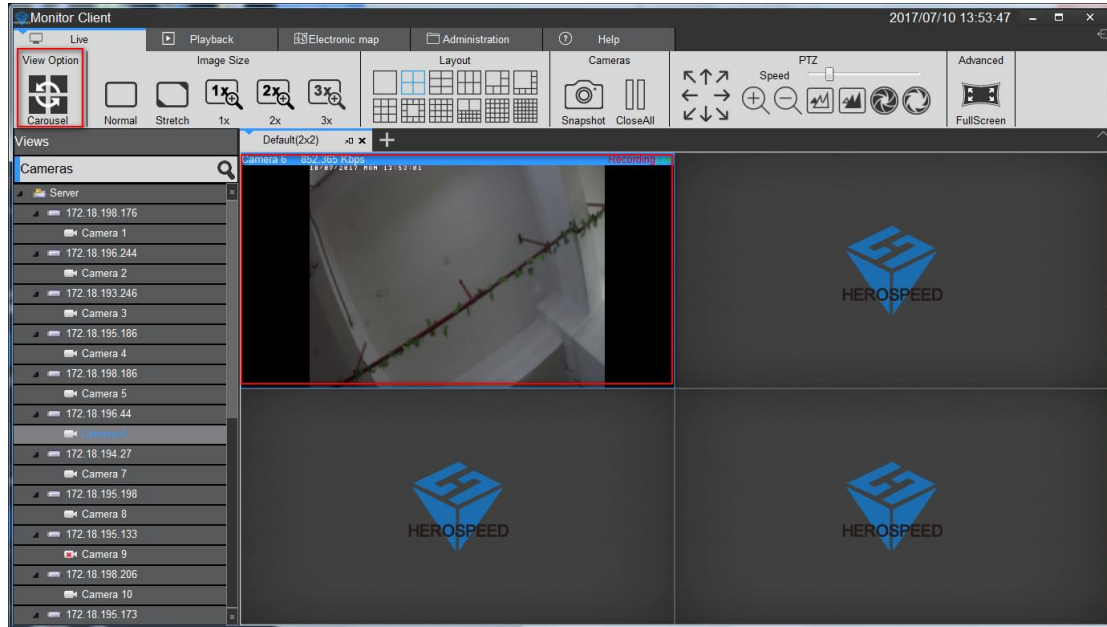
2.2.2.5 Video Window Toolbar Function

- a. stop the current window and open video
- b. Image capture
- c. Local Recording
- d. talkback
- e. sound.
- f. Stream Switching
- g. digital zoom



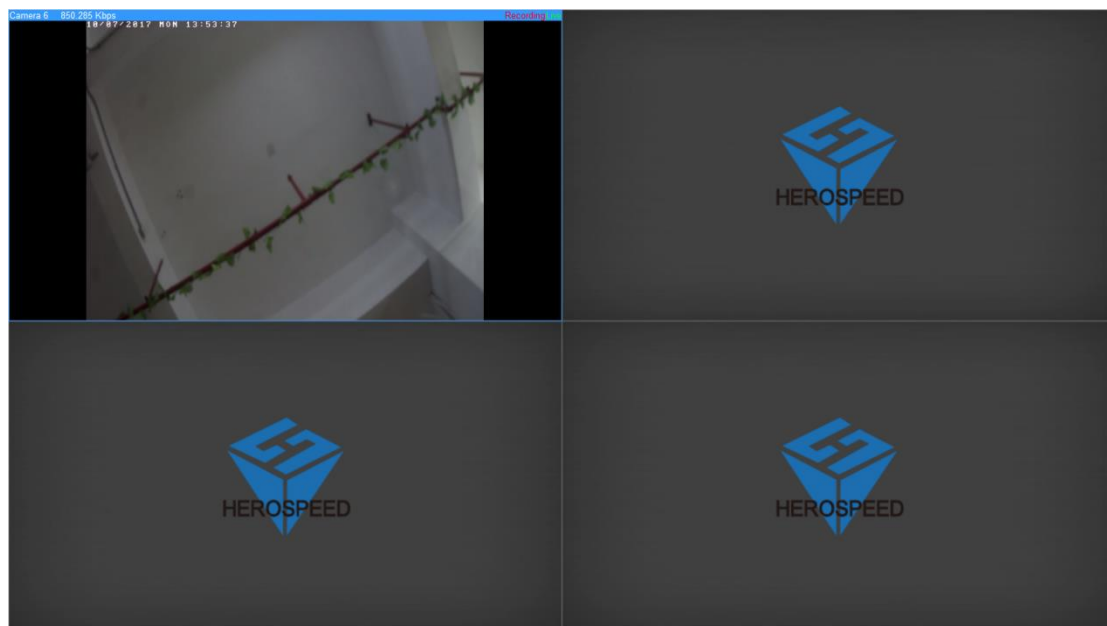
2.2.2.6 View polling

Click the button to open the round robin round robin view, click again to close the round robin.



2.2.2.7 Full Screen

Click to view full-screen to enter full screen mode, right-click on the screen to exit full-screen button to exit full-screen mode

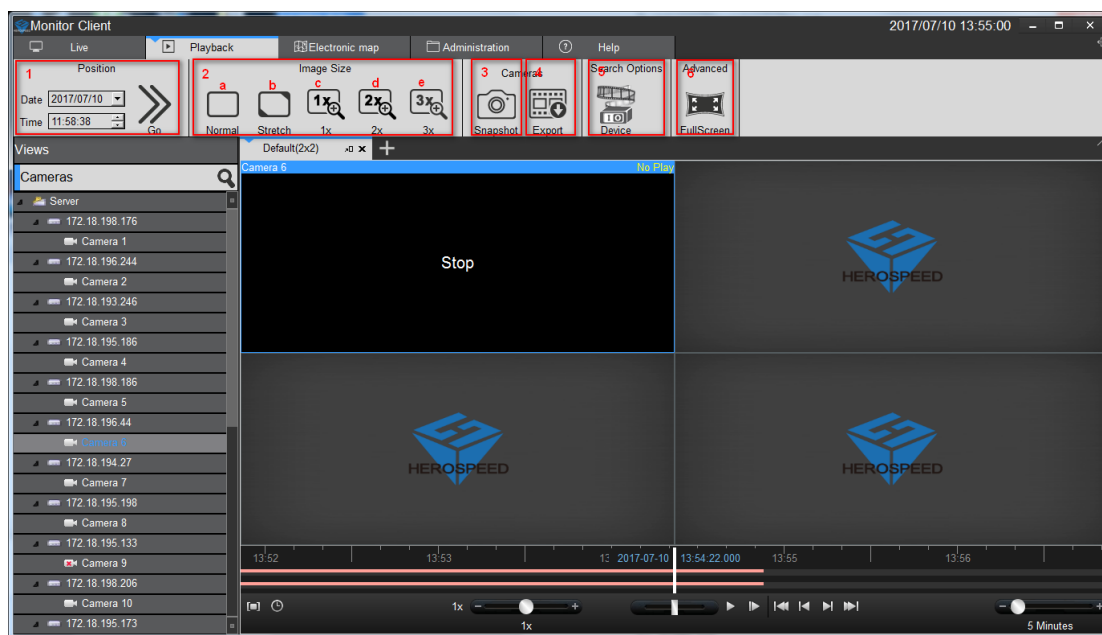


2.2.3 Playback

Playback is divided into platform video playback and video playback devices.

Under VMS platform playback only in case of server configuration can have playback device playback only in the case of video equipment to playback.

2.2.3.1 Playback Interface Features

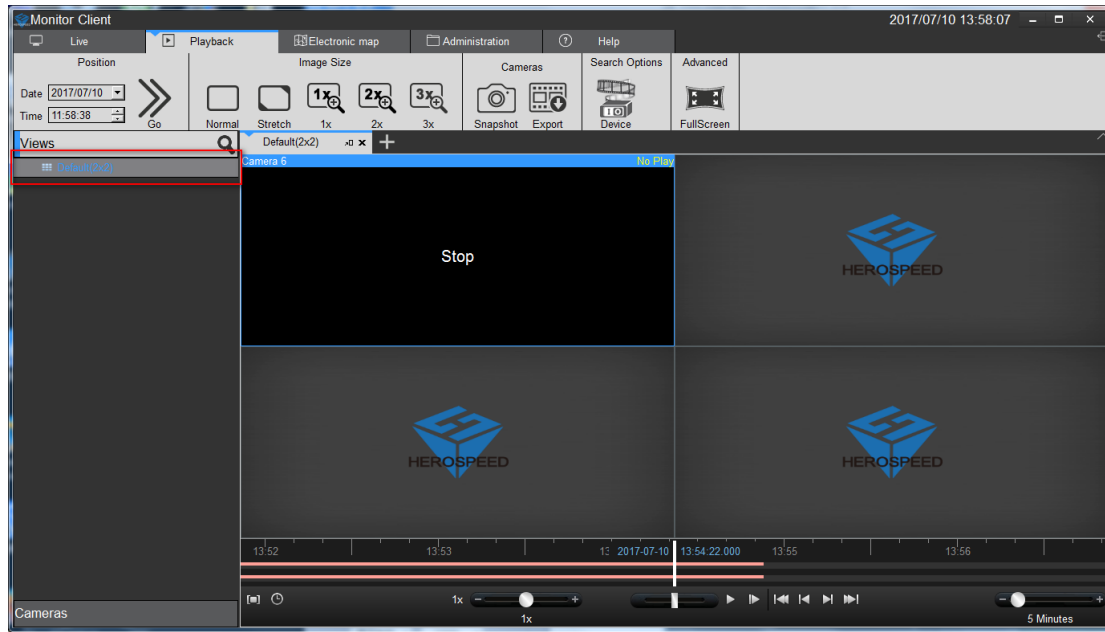


- 1> Location: Depending on the selected time position quickly locate to a specified location
- 2> image size
 - a. routine: The image is displayed in the actual proportion
 - b. Stretch: The image is displayed in the window size
 - c. 1 times: the image is not scaled
 - d. 2 times: 2 times image to enlarge
 - e. 3 times: 3 times image to enlarge
- 3> Snapshot: Save the currently selected video playback window
- 4> Export
 - a. playback platform to export the currently selected playback video window, select the time period
 - b. equipment playback in the export file selected in the list of video files
- 5> Device: Enter the playback interface device
- 6> Full screen: view into full screen mode

2.2.3.2 platform video playback

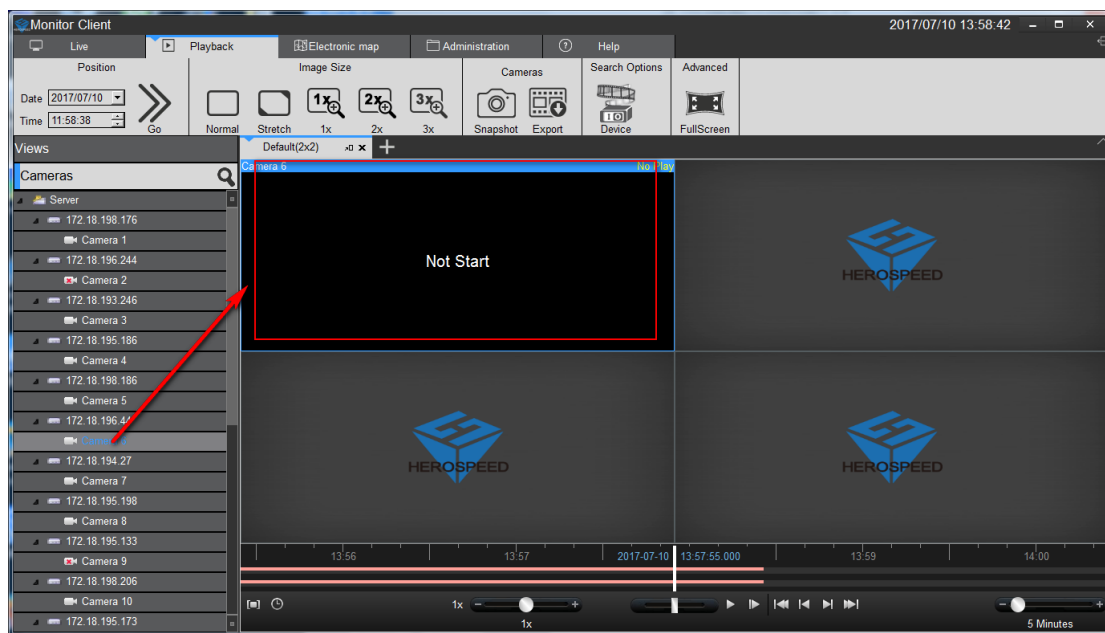
2.2.3.2.1 switch views video playback

View user edited video playback fast switching



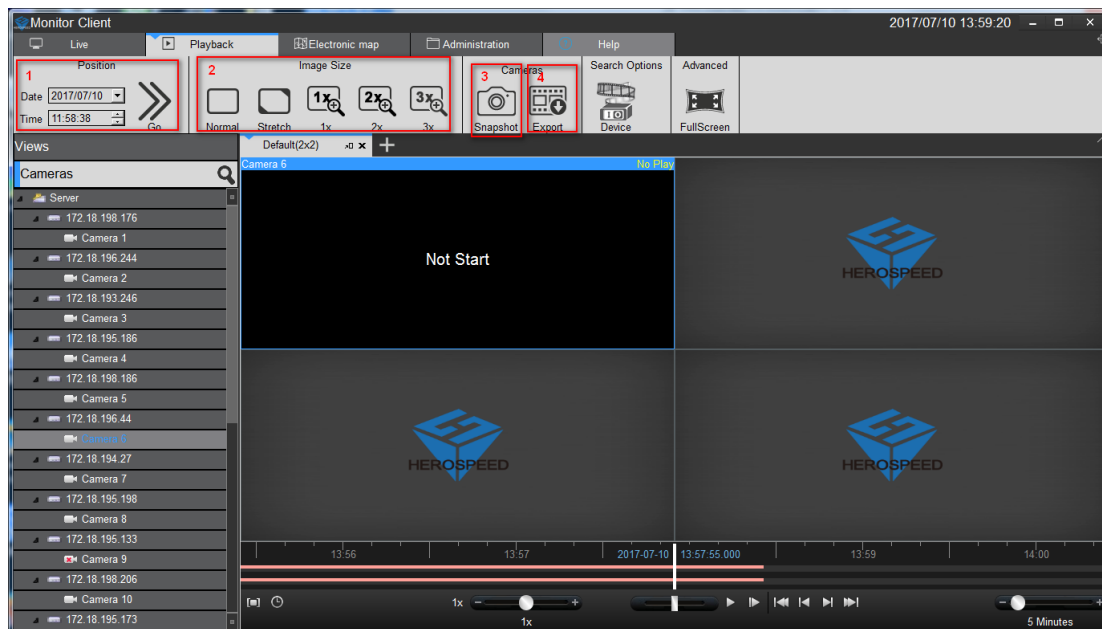
2.2.3.2.2 The limiting choose camera video playback

Select the desired camera onto the specified window



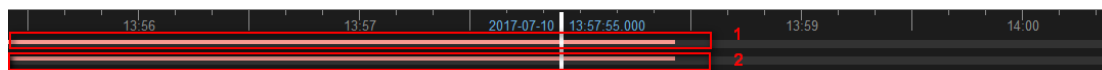
2.2.3.2.3 Video Search

Enter playback interface or playback interface switching view, the view will automatically search out all the time in the video window, and displayed on a timeline



Timeline of type:

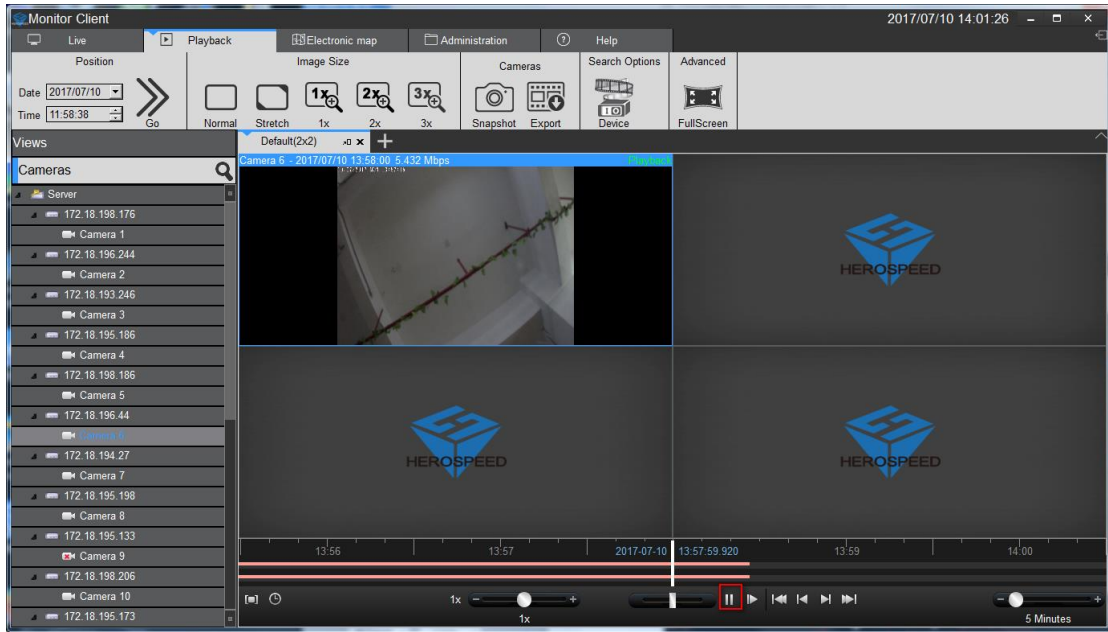
- 1> in the timeline shows the currently selected window video timeline.
- 2> In the following timeline shows the current view all the video cameras and the timeline set.



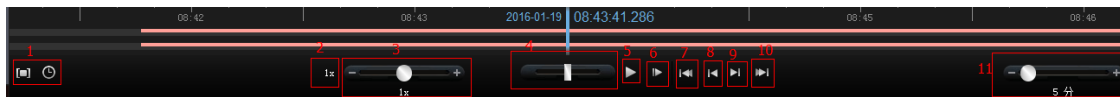
2.2.3.2.4 video playback

2.2.3.2.4.1 synchronous playback

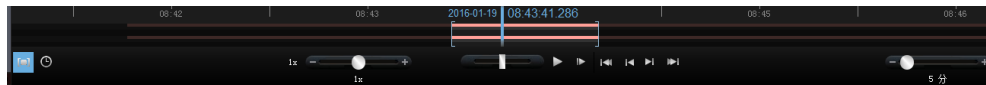
Click the play button to start video playback, the playback mode to view simultaneous playback, the view in the window will play back video at the same time



Synchronous playback function Toolbar description:



1> Playback area: You can select the playback range, in this range loop playback.

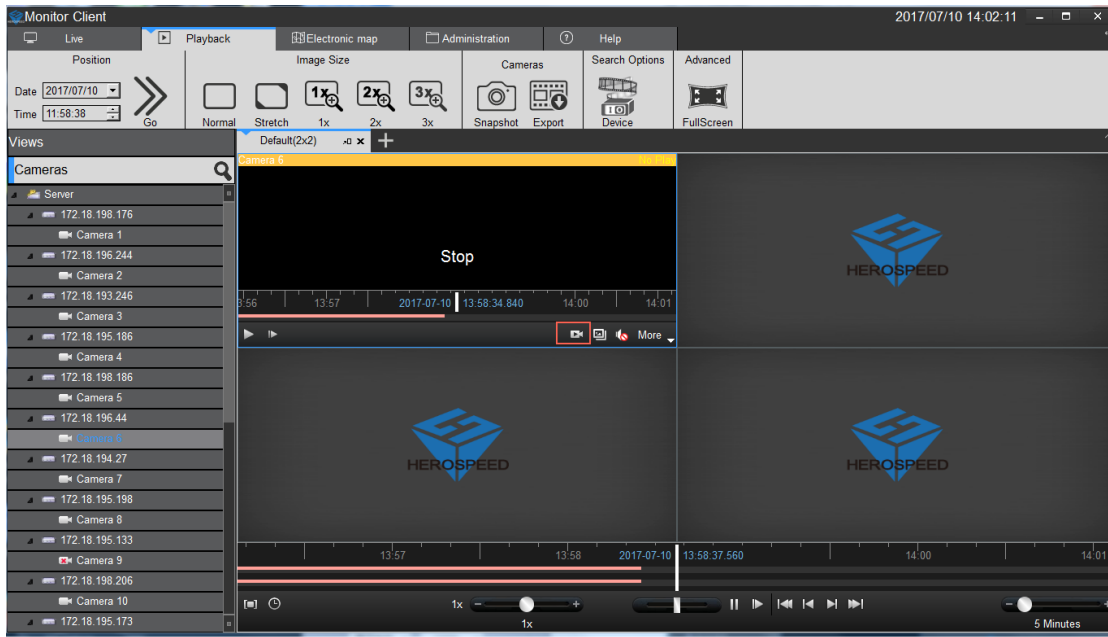


- 2> 1 multiple playback: fast switching to a multiple of the playback.
- 3> Playback multiple adjustments.
- 4> Quick search video.
- 5> Start / pause playback.
- 6> single-frame playback.
- 7> The current window of the first video segment.
- 8> The current window of ten Previous video segment.
- 9> The current window of the next video segment
- 10> The current window of the finally video segment
- 11> The timeline display range.

2.2.3.2.4.2 independent playback

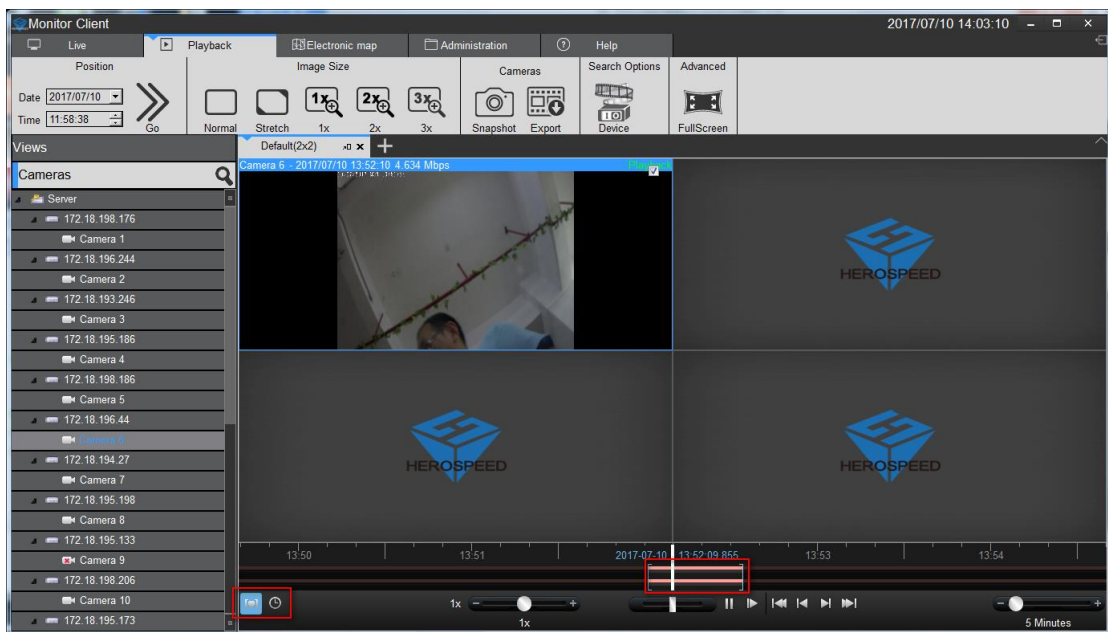
If you only need a video playback window, you can use a separate playback. Independent playback video window will not be synchronized playback control toolbar. Independent playback window in the simple playback control bar.

Independent playback window in the window toolbar, click the independent playback button to playback individually



2.2.3.2.4.3 loop playback

You can specify a time range for continuous loop video playback.

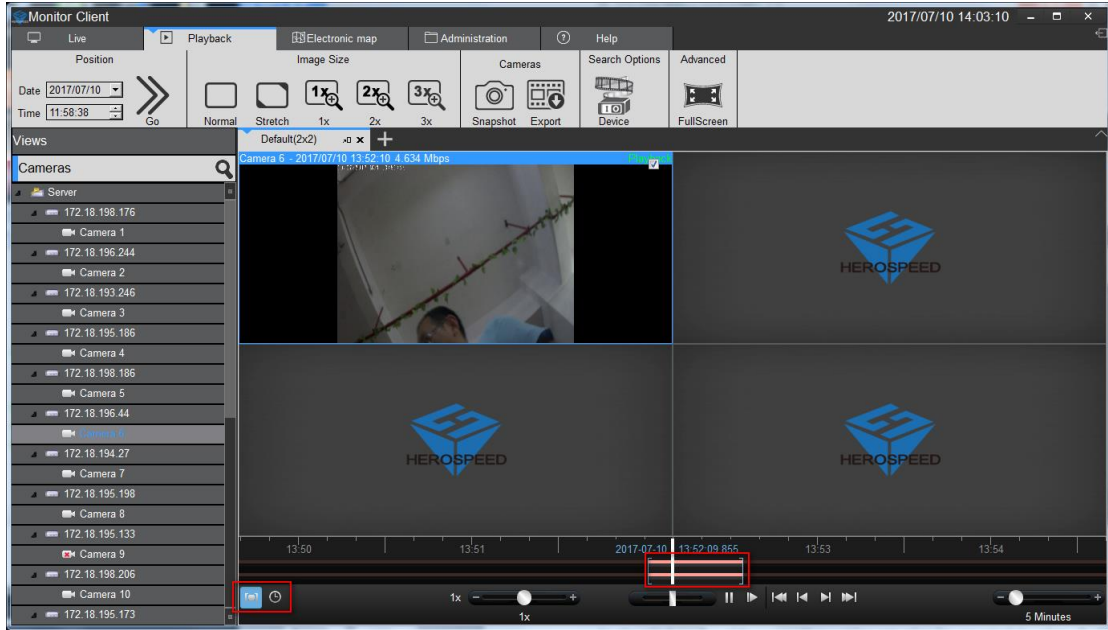


2.2.3.3 Export Video Platform

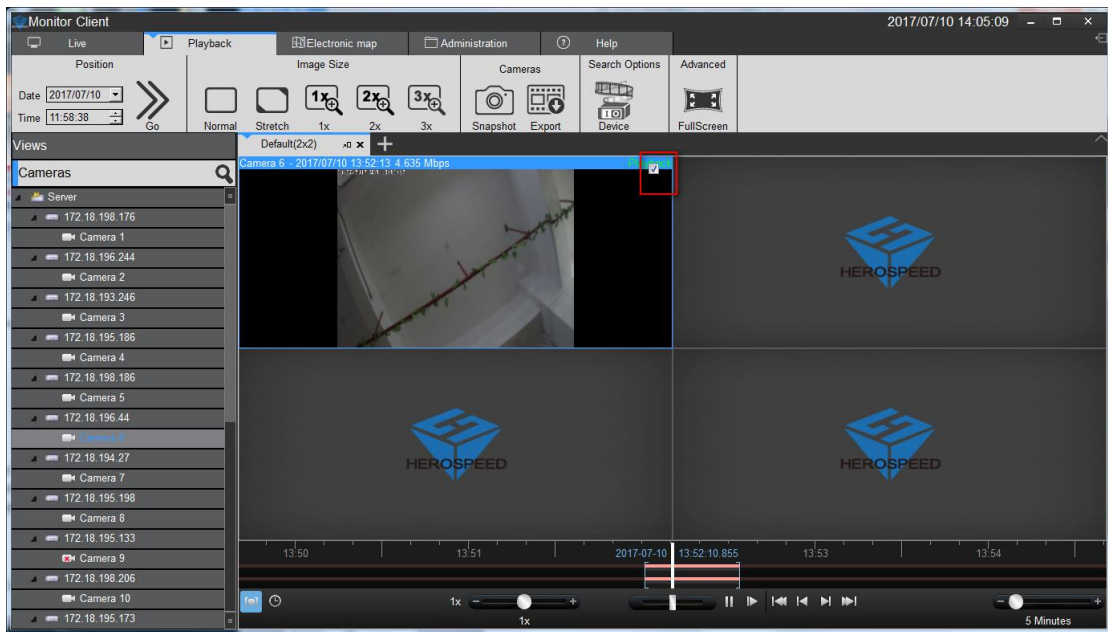
You can export the video server in the client on demand. You can export the view in the window of a video recording, video can also be exported in view of all of the video window.

Video exported for use:

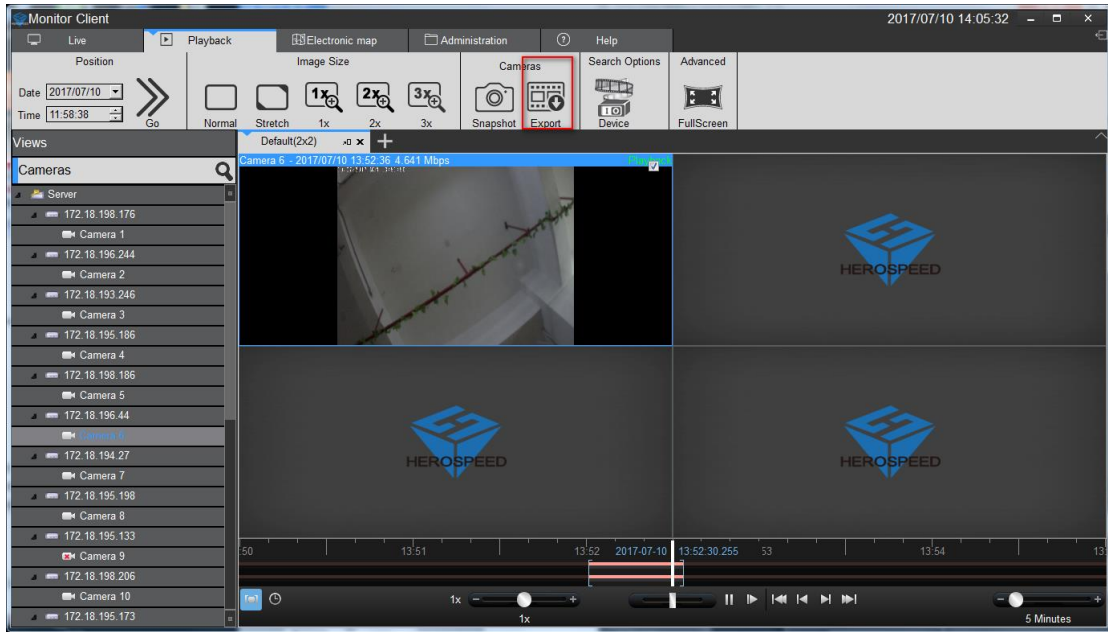
- 1> Select the time range you want to export.



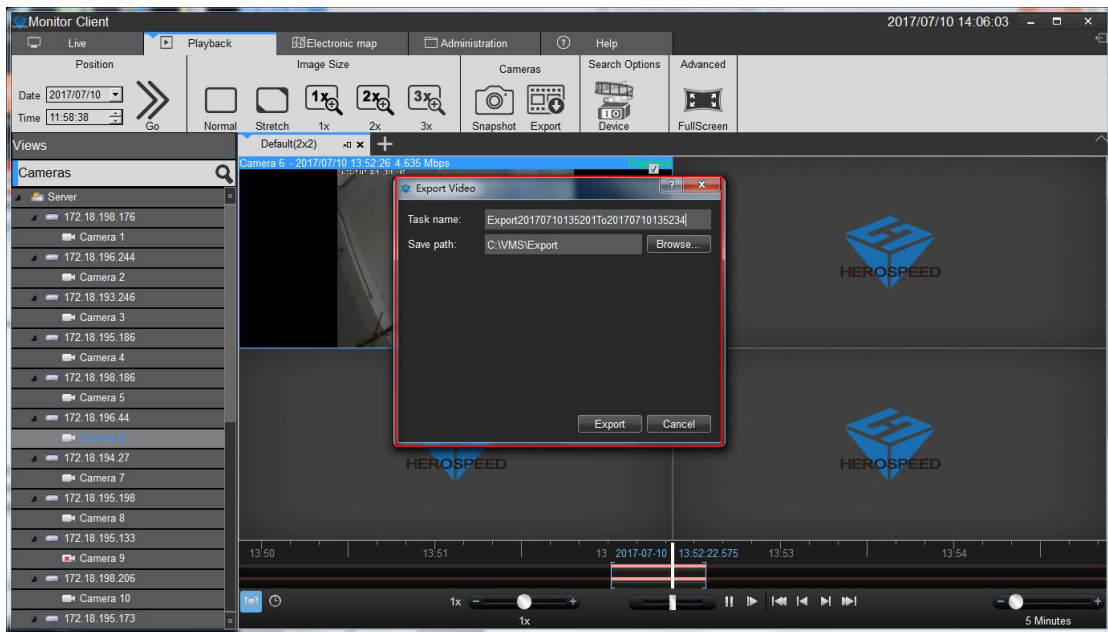
2> Select to export video window.



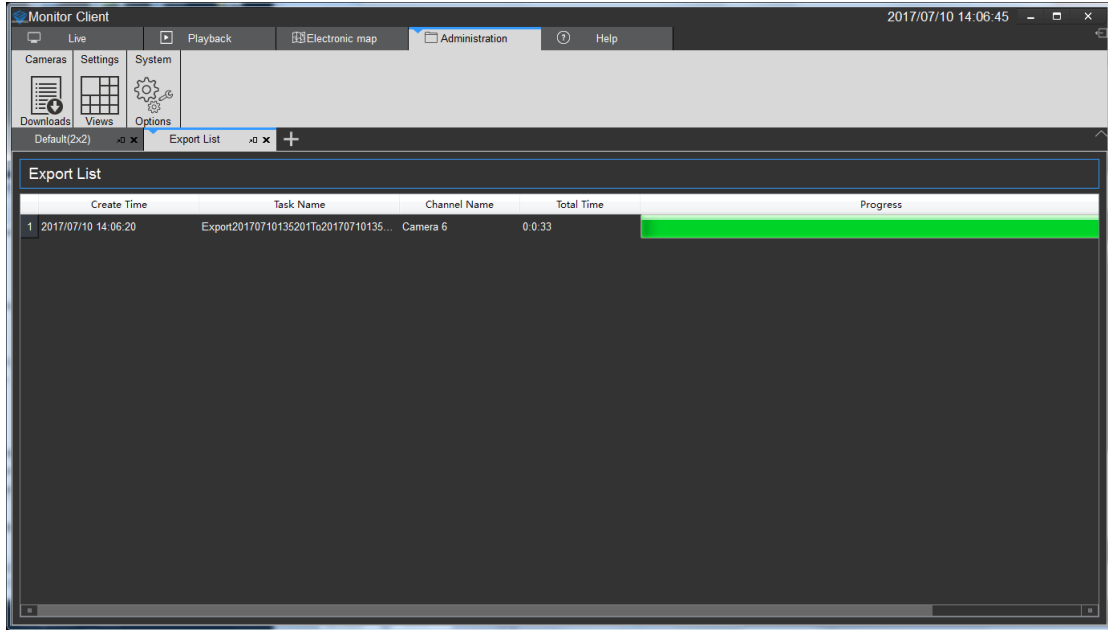
3> Click the Export button.



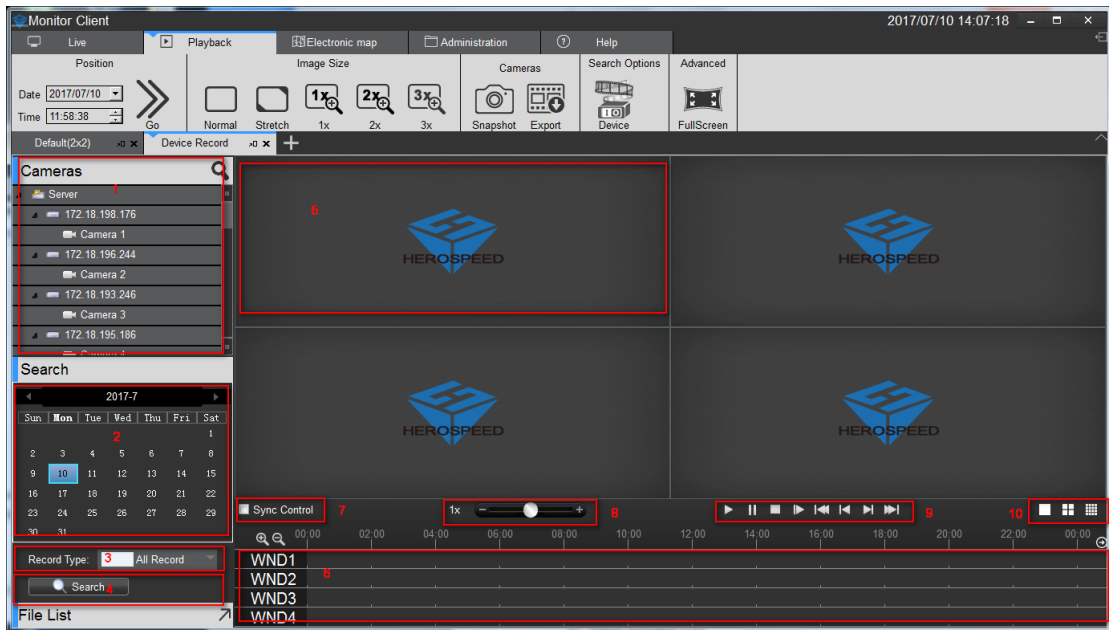
4> Select the name and location of the exported.



5> After the export is completed in management functions in the export list to view details



2.2.3.4 Device Playback



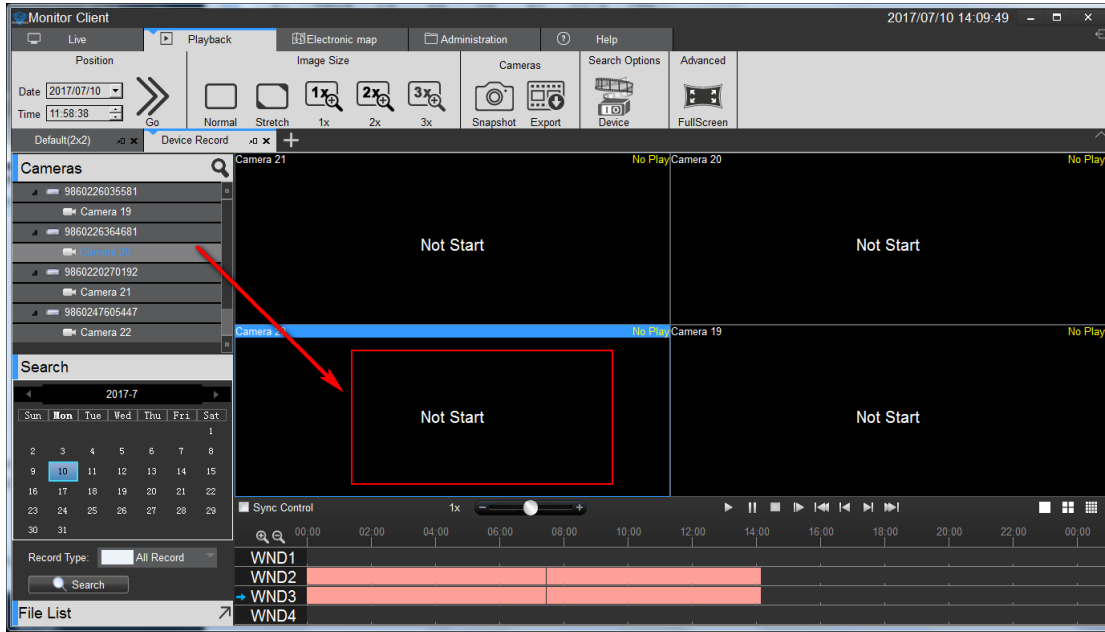
- 1> Select the channel to be played back in the device list and drag the playback window (5)
- 2> select the date to be played back
- 3> Select recording type
- 4> Video Search
- 5> Playback Window
- 6> Recording Schedule
- 7> Select synchronous control video playback
- 8> Video Playback speed control

9> Recording Playback Controls

10> View Control

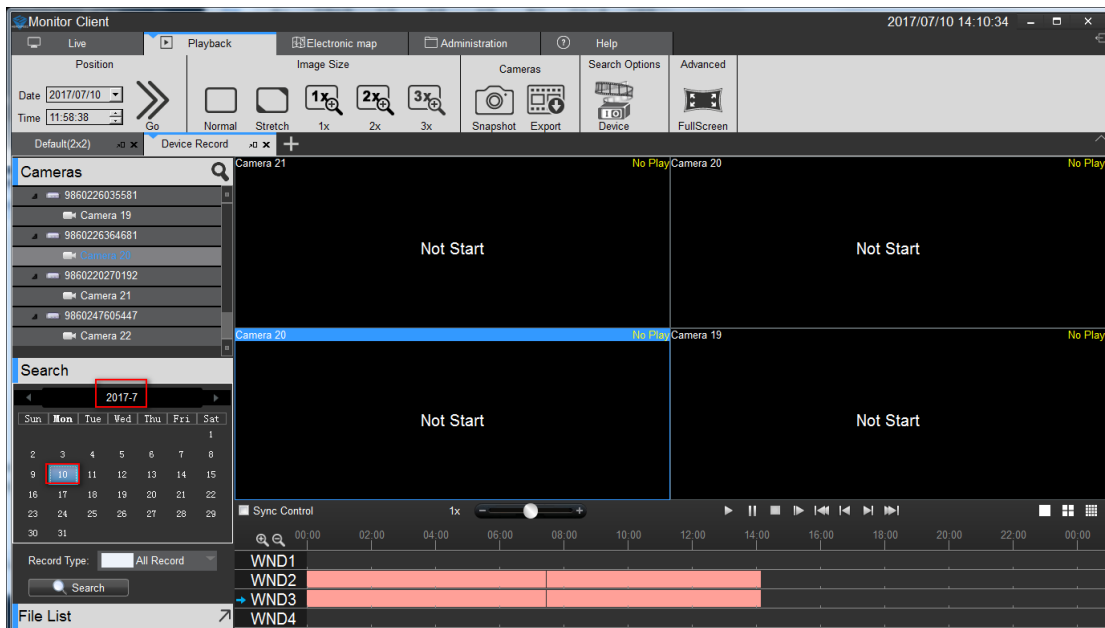
2.2.3.4.1 Select playback video camera

Select playback video camera



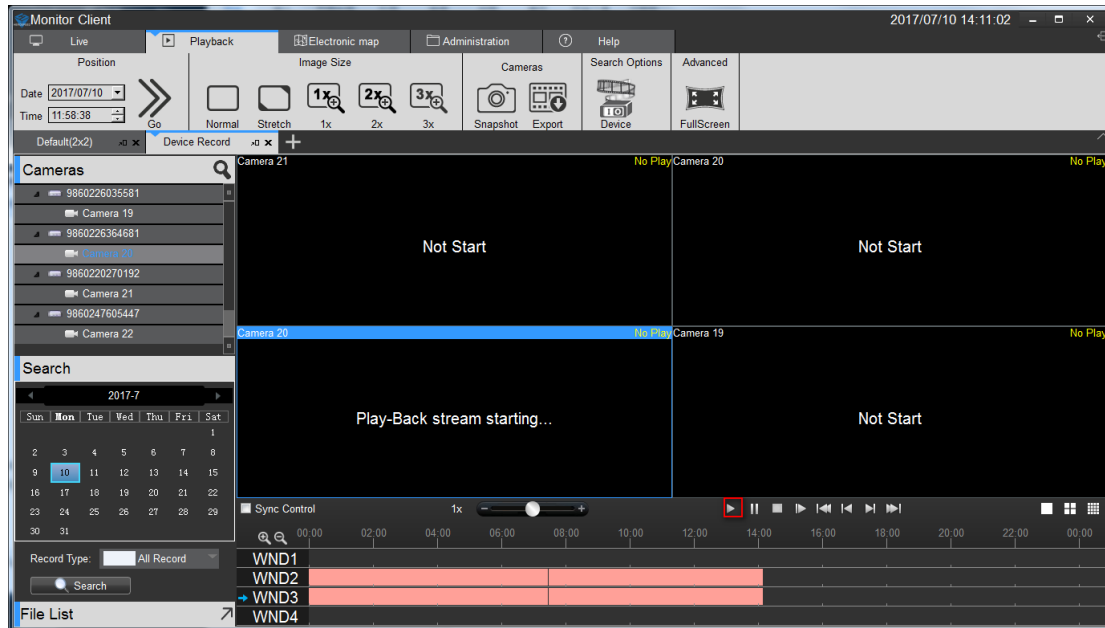
2.2.3.4.2 Video Search

After dragging the camera view automatically search out all the windows in the view to set the date of the recording time, and displayed on a timeline

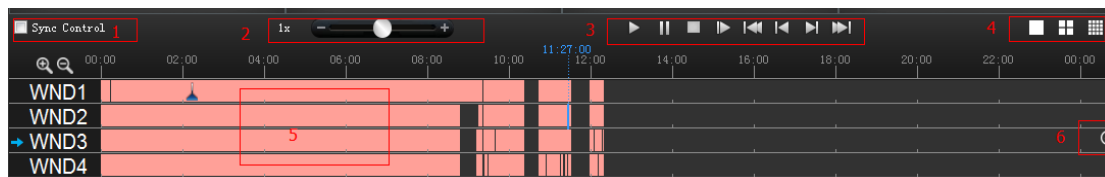


2.2.3.4.3 video playback

Click the play button to start video playback of the currently selected window

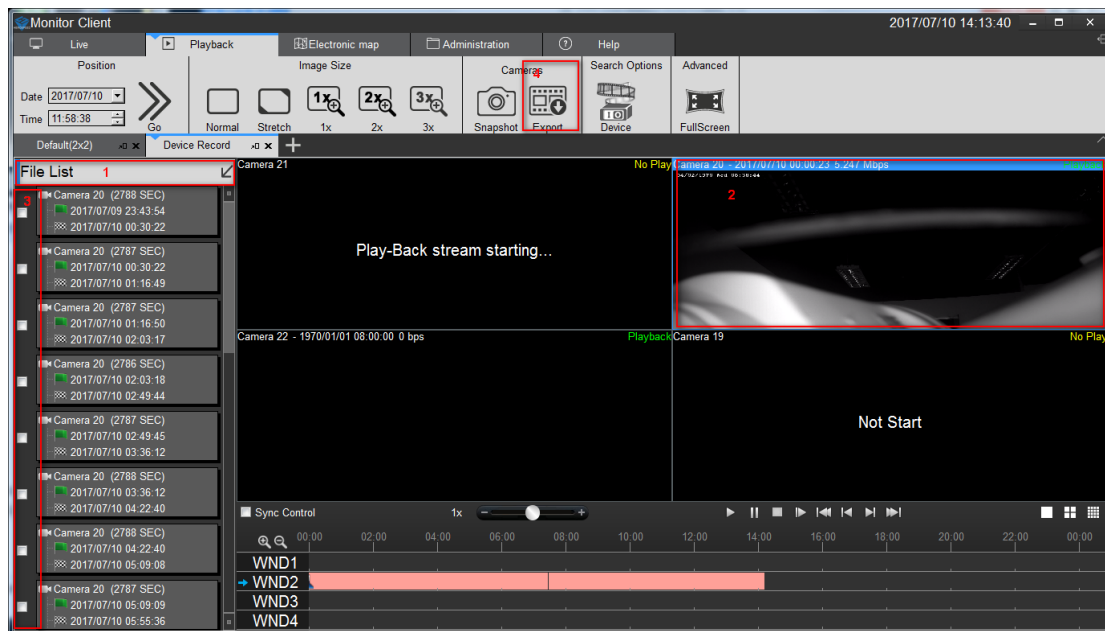


Function Playback Toolbar description:



- 1> synchronization control: When selected, the playback control is valid for all windows
- 2> Playback Speed: Adjust the playback speed of video
- 3> playback control: playback of video control start, pause, stop, single frame playback, video playback of the first segment, a video playback section, a video playback section, a video playback of the last paragraph
- 4> View options: choice of single window view, 4, and 16 window view window view
- 5> Timeline: Displays recording time
- 6> Adjust Timeline Display: 16-window view, click scrollable window display other time

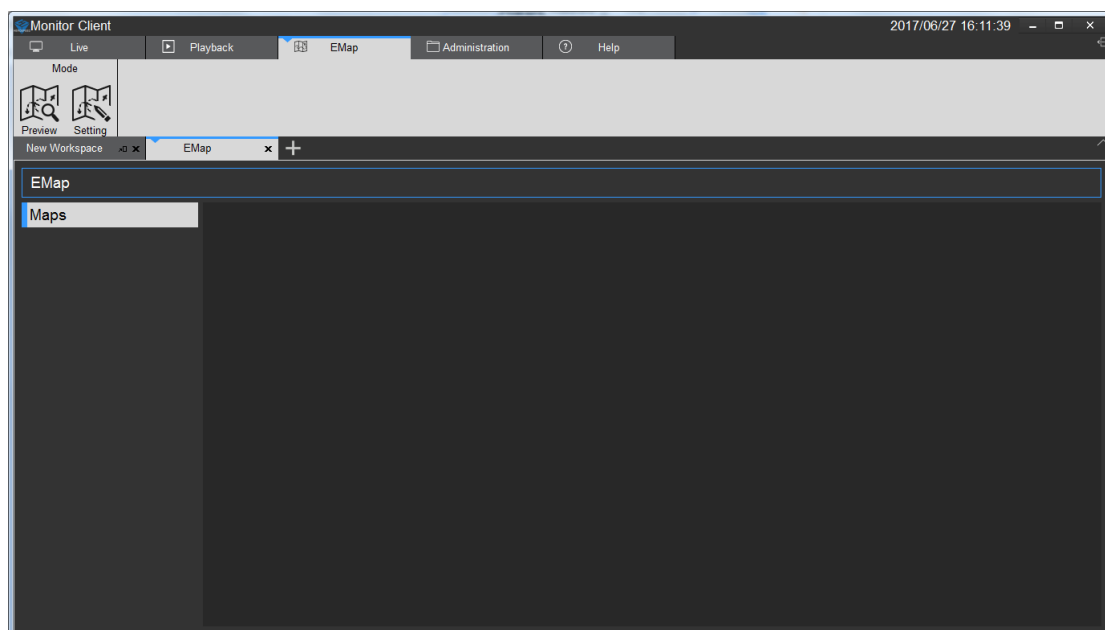
2.2.3.5 Export recording equipment



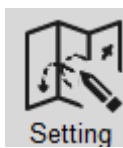
- 1> Click "File List" arrow
- 2> Select Export Video window
- 3> Select the video file you want to export
- 4> Click Export

2.2.4 Electronic Map

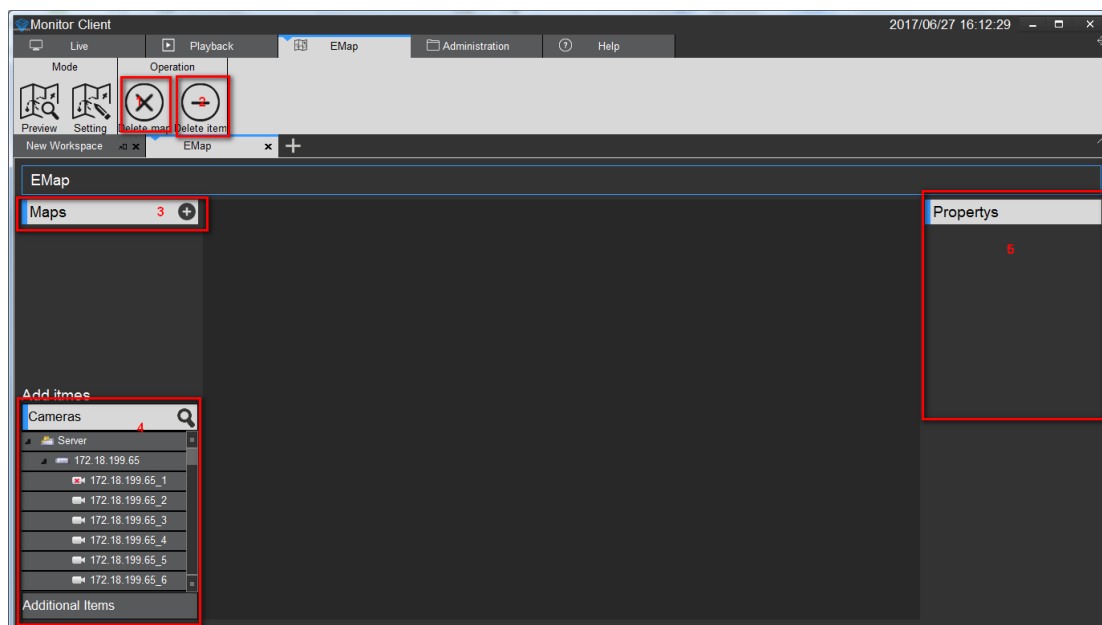
Select "Map" in the main interface to enter the electronic map related interface.



2.2.4.1 Editing Electronic map



Clicked , Enter the map interface.




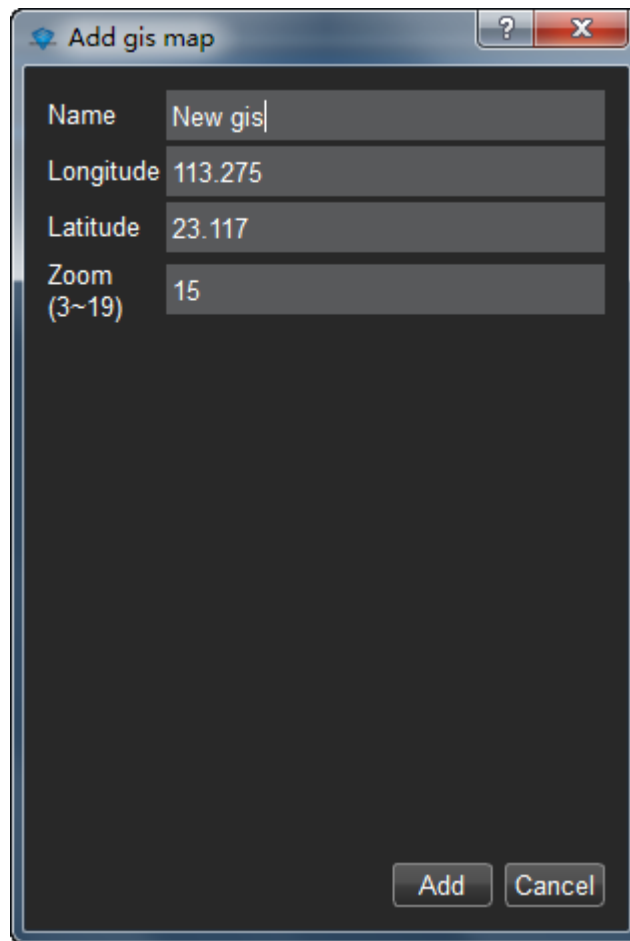
Map editing interface function introduction:

- 1> Delete electronic map
- 2> Delete the element nodes on the electronic map
- 3> Add elements, including cameras and other items (request)
- 4> The attributes of a map or element

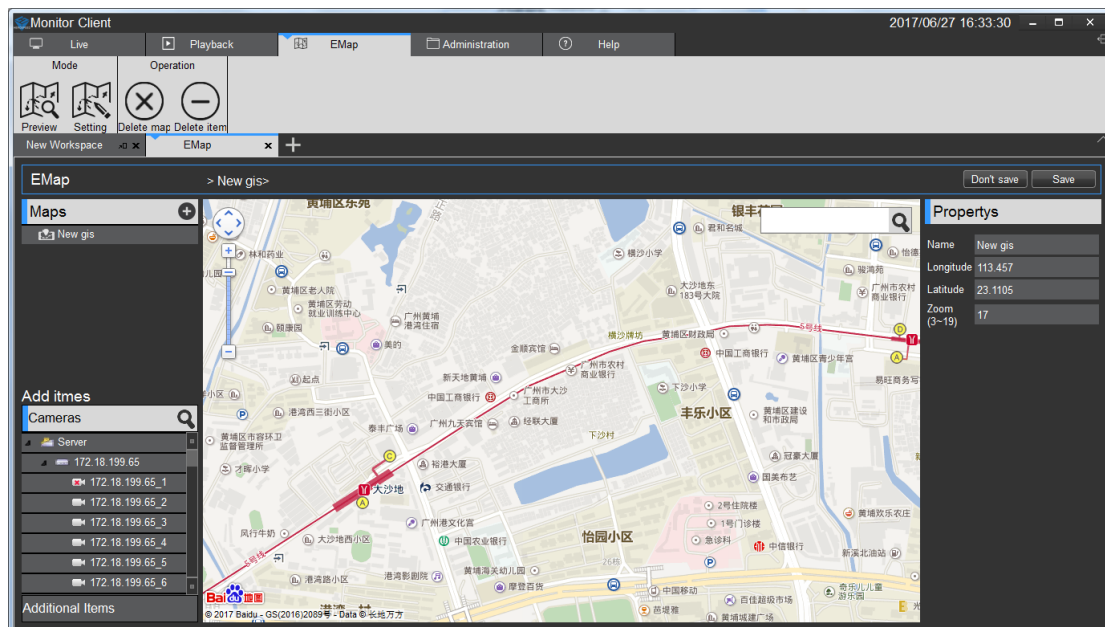
2.2.4.1.1 Edit Electronic map



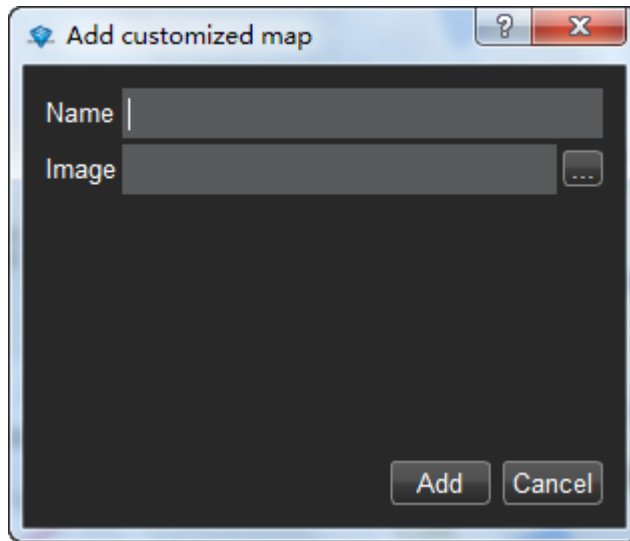
Clicked  select customized or Gis map, When selecting Gis map, the "add Gis map" dialog box will pop up. You need to enter the new map name, longitude and latitude, scale (default value).



The Gis electronic map is an added success, and you can add elements to the new map.



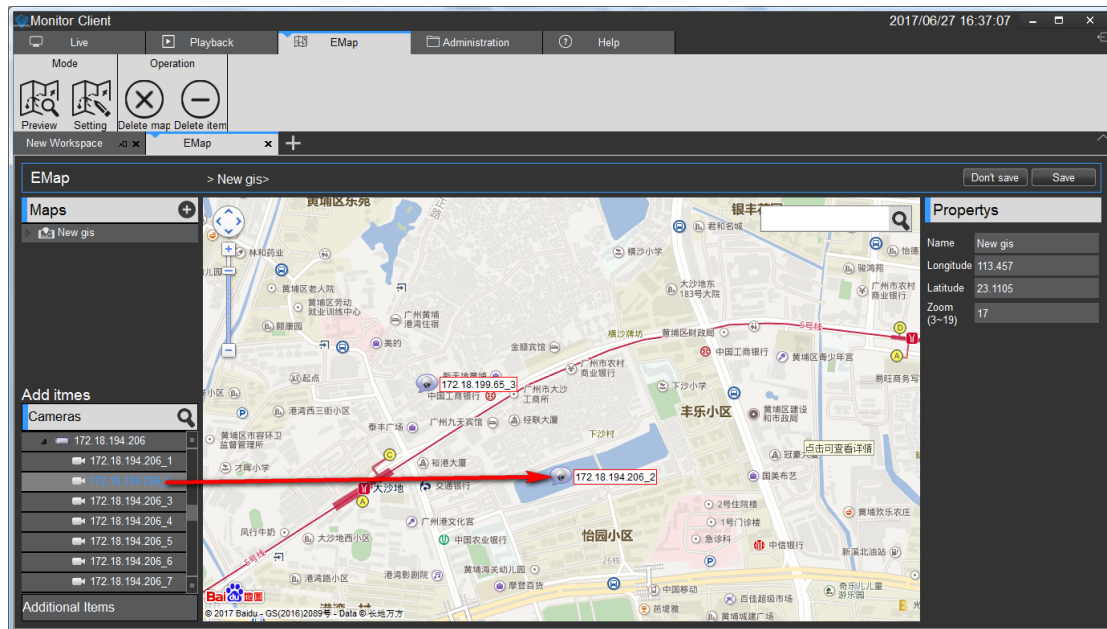
The new custom map will pop up the "add custom map" dialog box, fill in the name and select the source of the image, and click "ok" to complete the addition of the custom map.



After adding the success, the remaining operations are equivalent to adding gis maps, followed by a gis map as an example.

2.2.4.1.2 Add camera elements

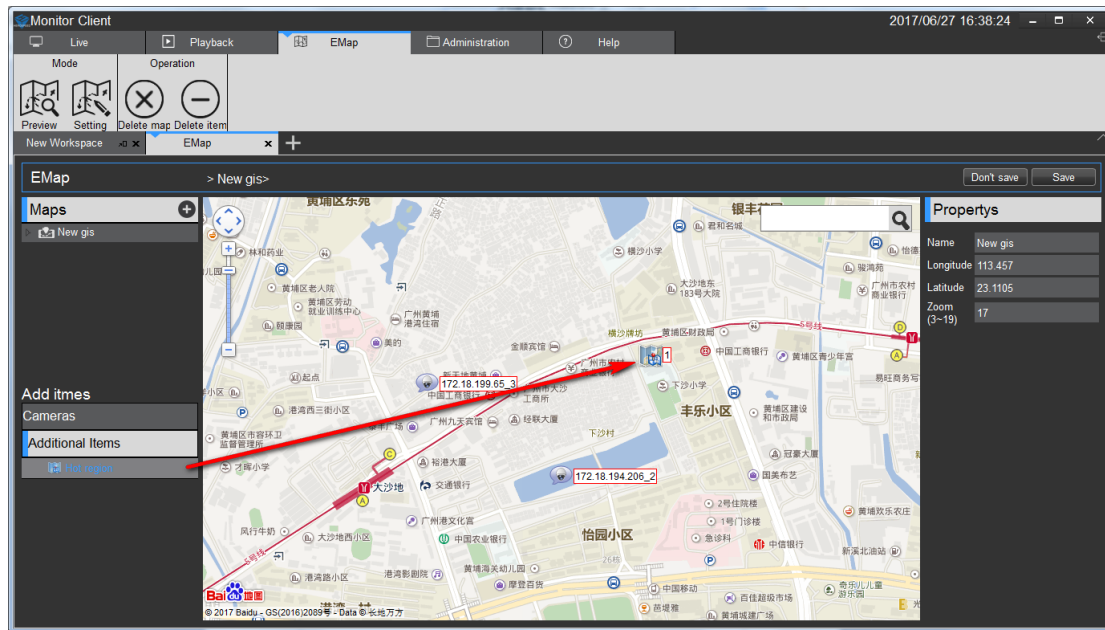
Click add element [camera] to drag the required camera to the location of the map. Click save as you add. Map size can be achieved by sliding mouse.



2.2.4.1.3 Add other elements

Clicked[Additional Items]to  drop to the map, Then

click save as prompted.



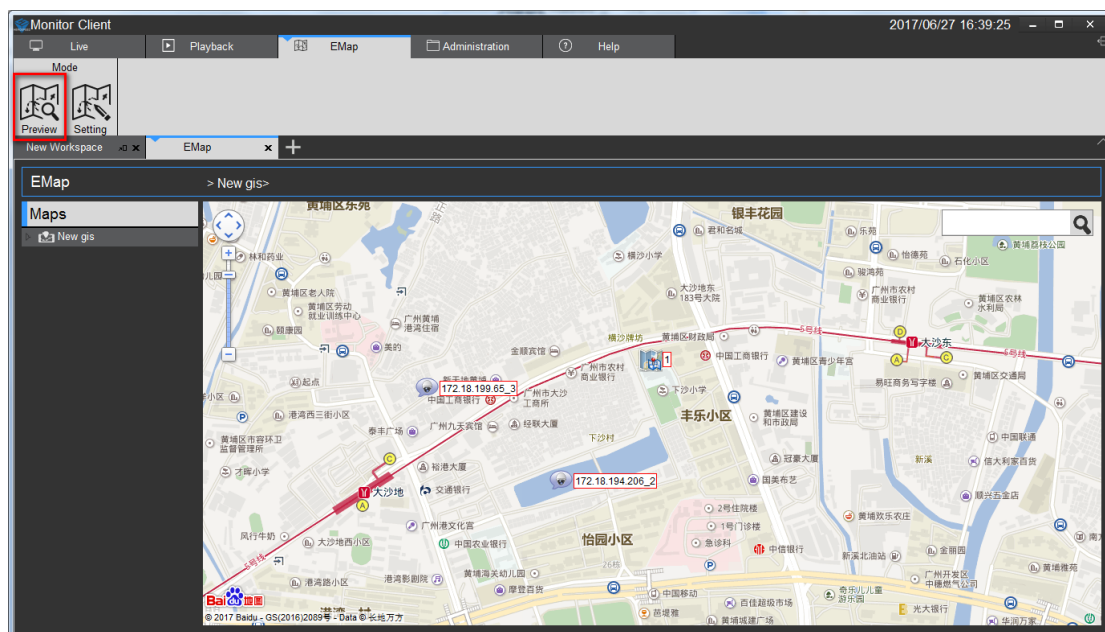
Notice:

When other elements need to be modified, you can modify them directly on the map.

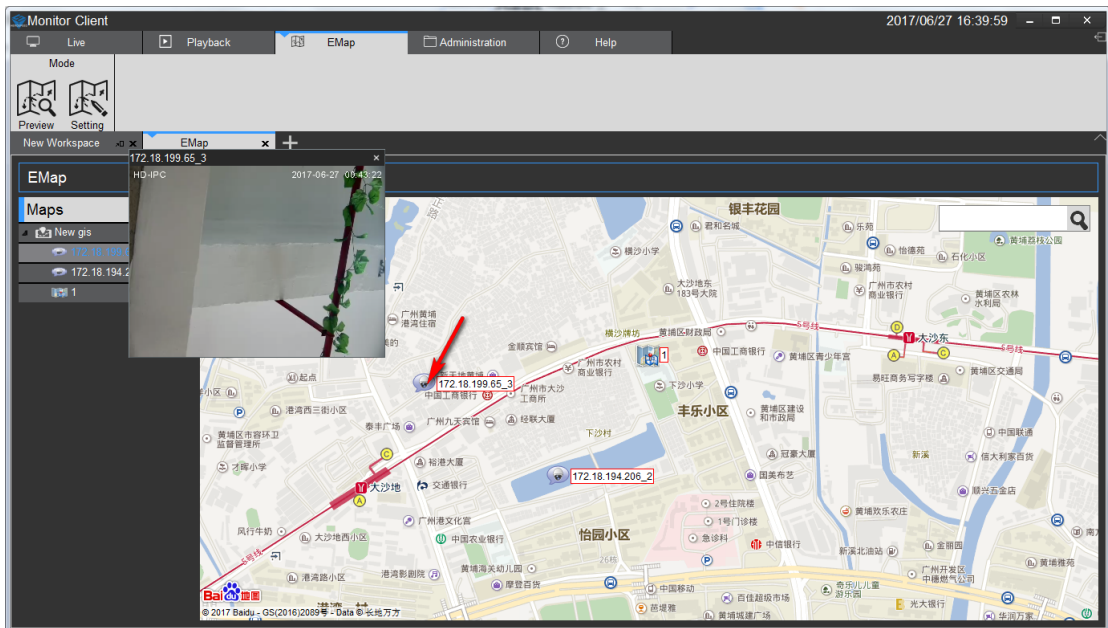
2.2.4.2 Preview Electronic map



Clicked **Preview**, switch to the electronic map preview interface.



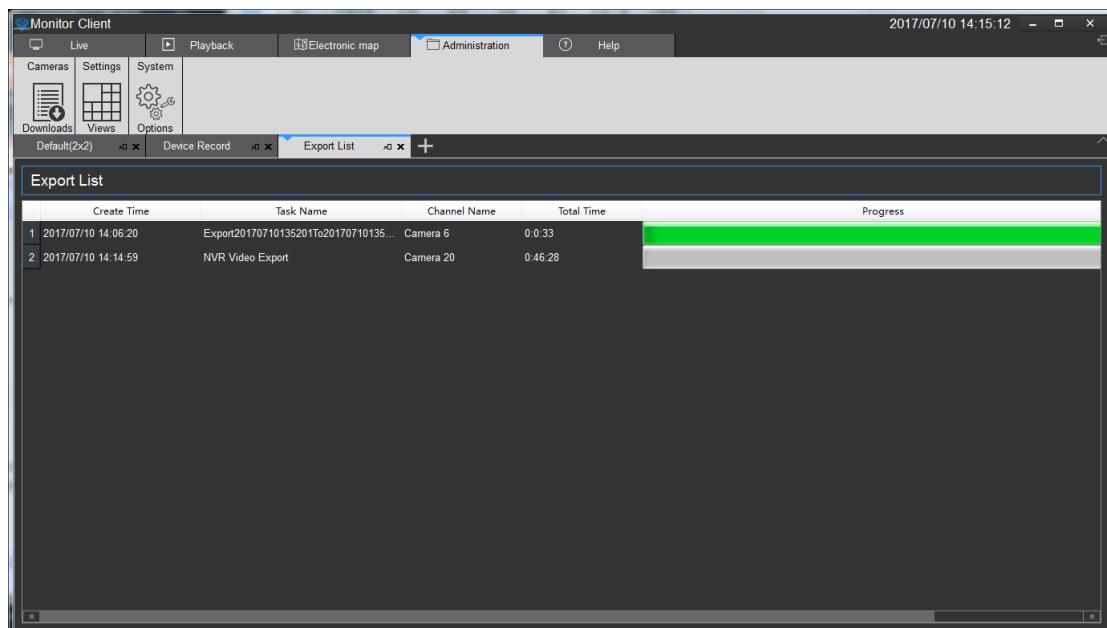
The double - click element displays the real-time monitoring image of the associated monitoring point.



2.2.5 Management function

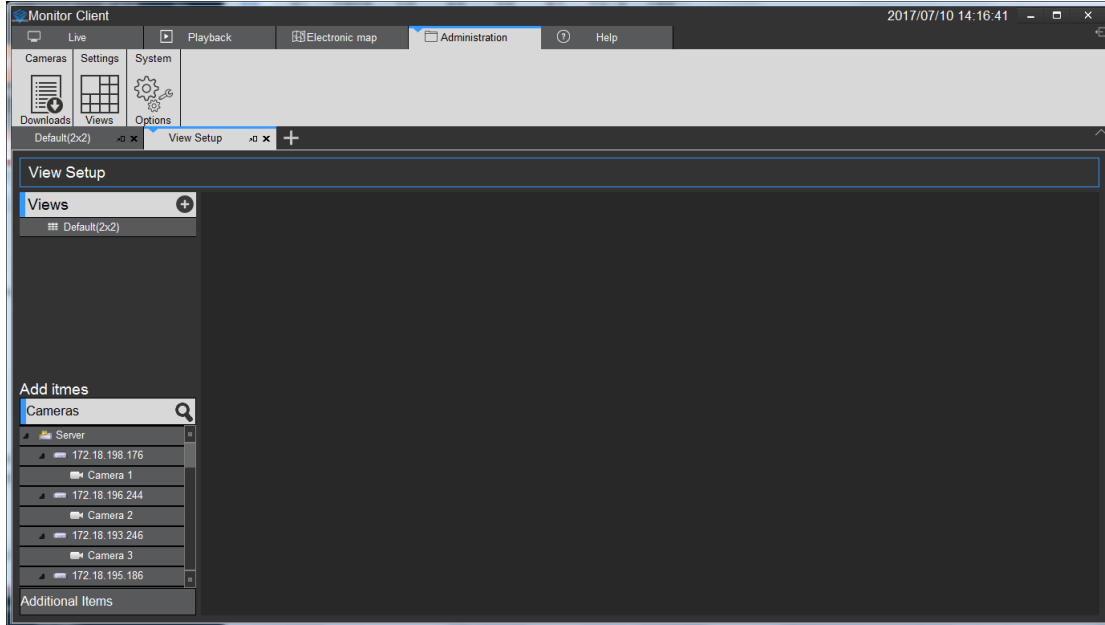
2.2.5.1 Export List

See video of the export list information



2.2.5.2 View Settings

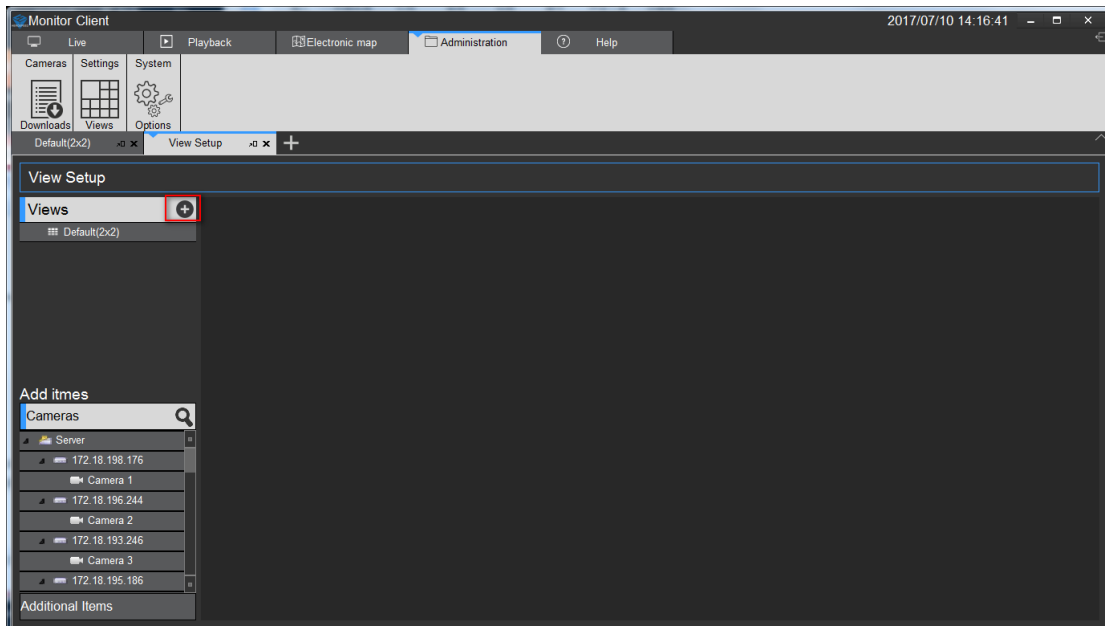
The role of view is that you can pre-edit content layout and views good views, quickly switch the video area. And there will be saved to the VMS platform for later use

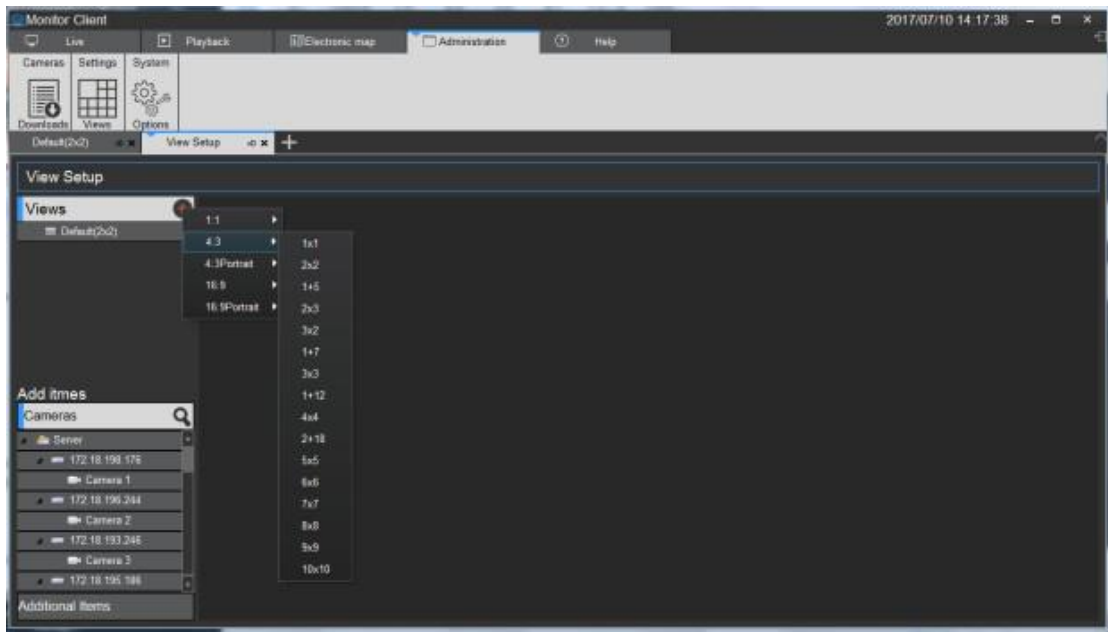


2.2.5.2.1 View Editor

2.2.5.2.1.1 New View

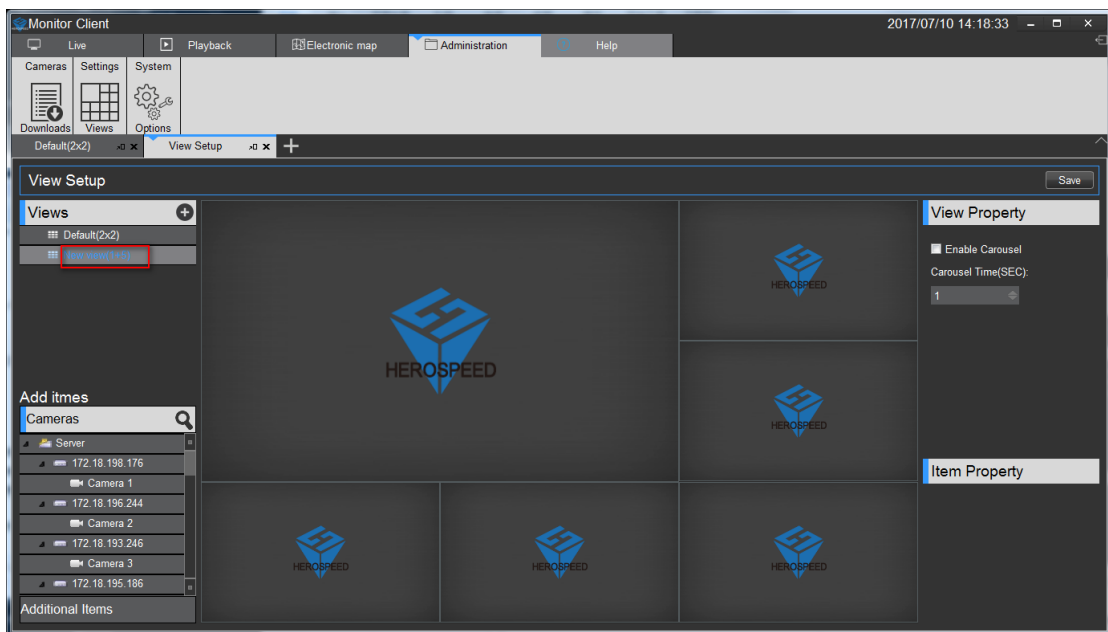
Click the Add button to select the desired view layout type



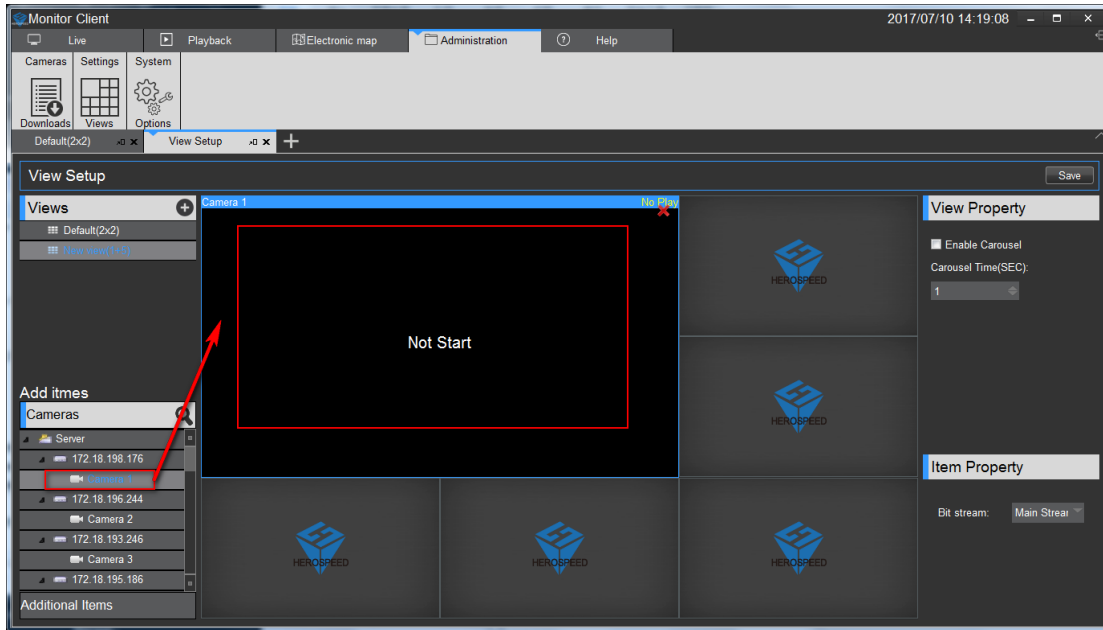


2.2.5.2.1.2 view content editor

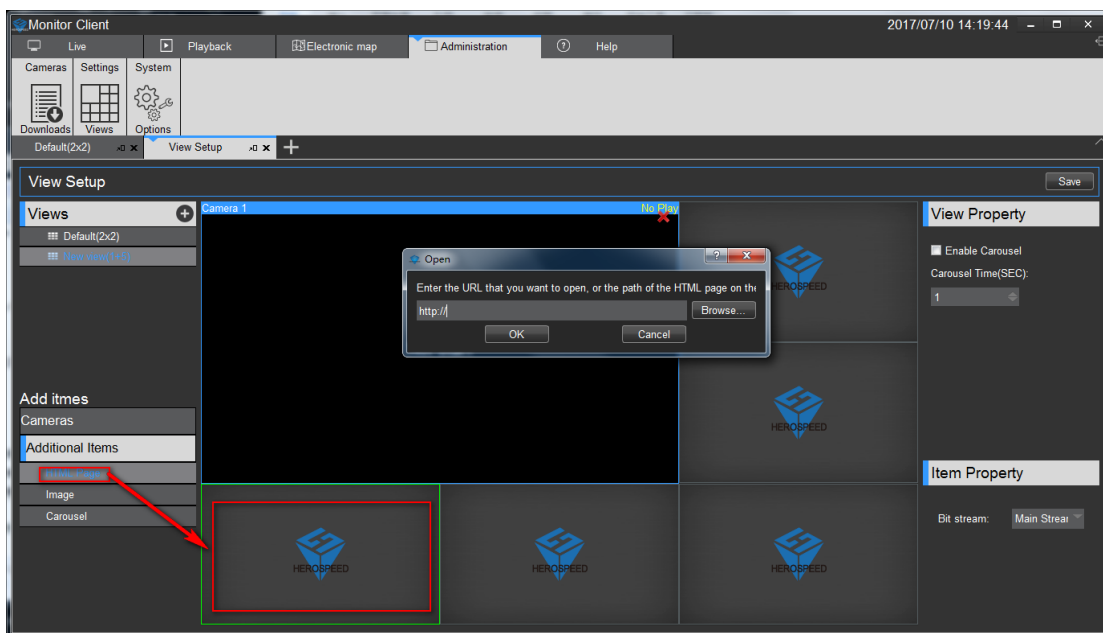
There are four types of views content, 1 Camera 2 Image, 3.HTML page 4 video carousel
 Select the view for editing



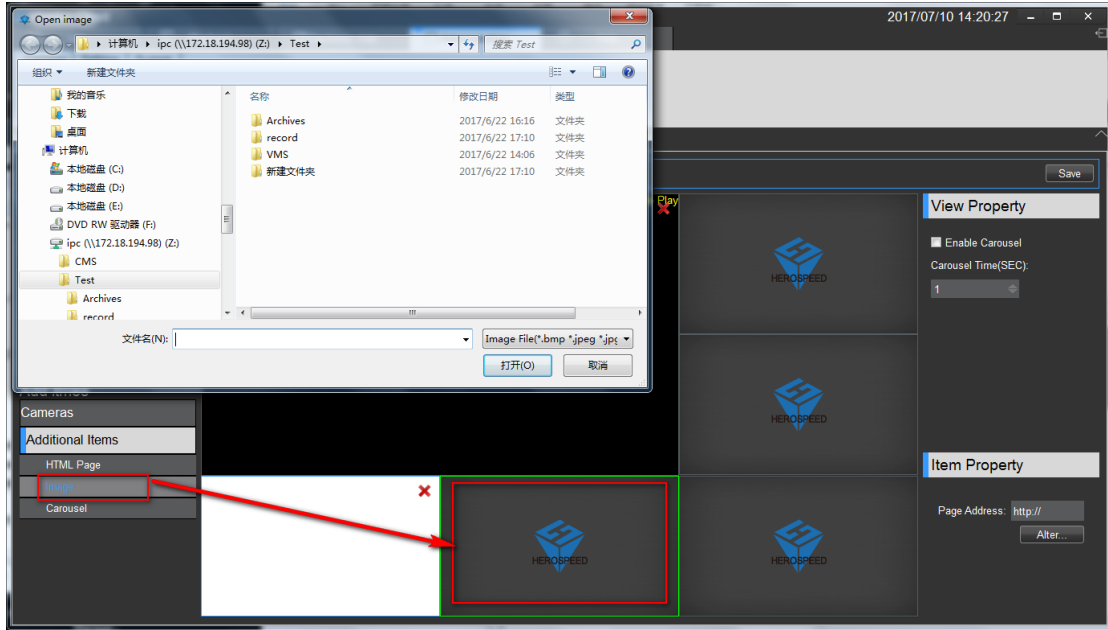
1> Set View window to add a video device, select the camera, onto the target window to complete the video to add.



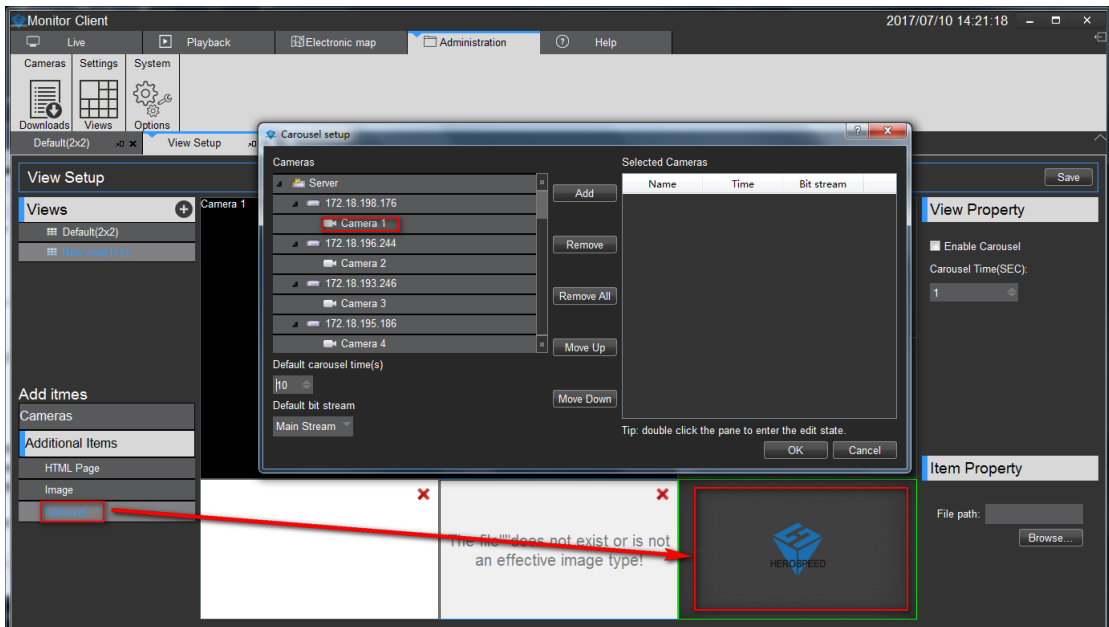
- 2> Set the page view window to add text
- Click on other items
 - Select the "HTML page"
 - Drag the specified window
 - Enter the web address



- 3> Set View window Add image
- Select the "Image"
 - Drag a specified window
 - Select a picture

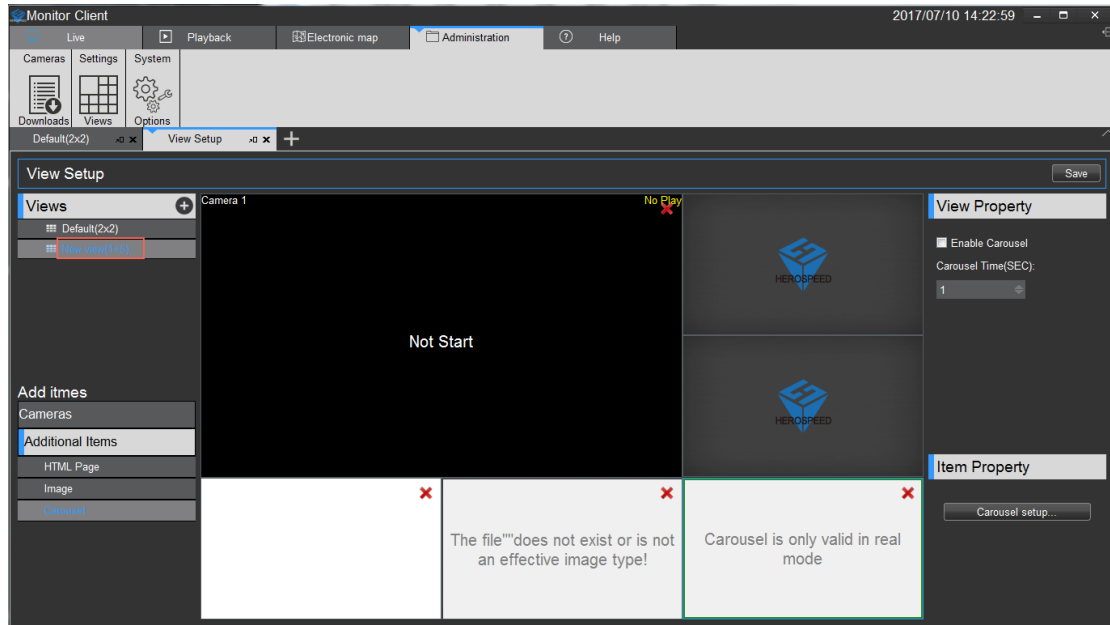


- 4> Set window view window to add round robin
- Select the "round robin"
 - Drag a specified window
 - Select the desired window polling device
 - Set the video window polling time
 - Set the video stream type



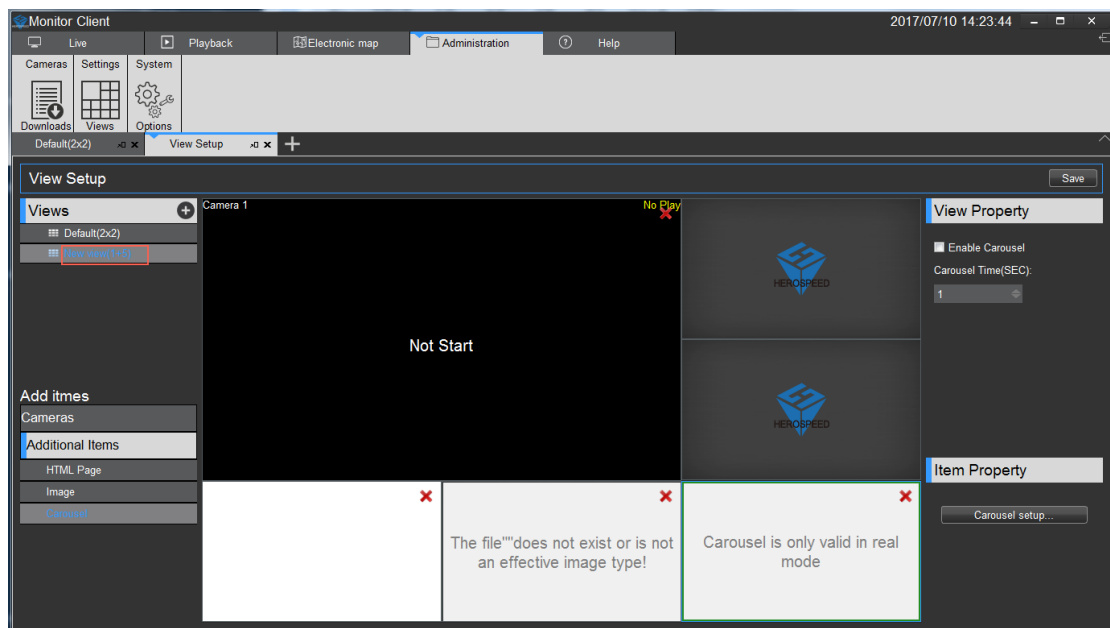
2.2.5.2.1.3 Modify the view name

Double-click to modify the view to enter edit mode, modify the view name



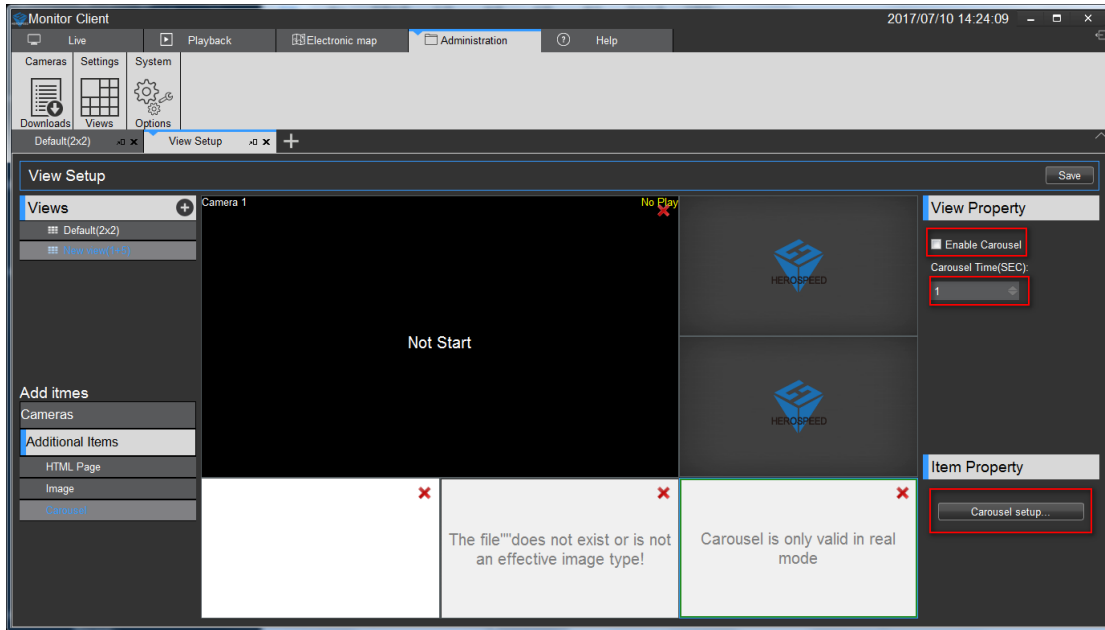
2.2.5.2.1.4 Delete View

Select the Right View pop-up menu select Delete View



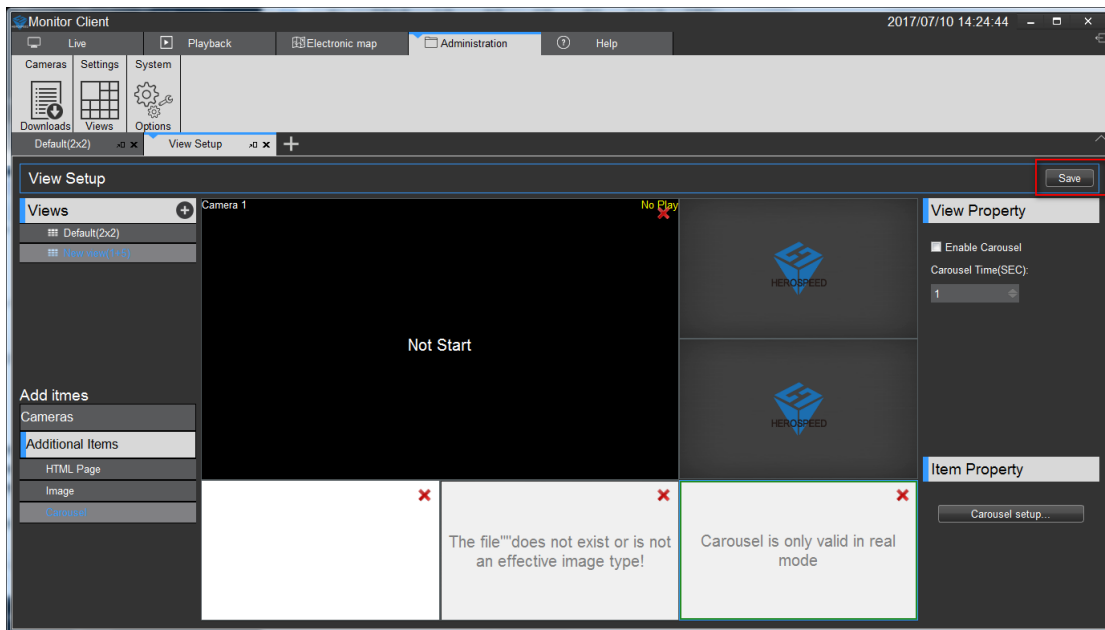
2.2.5.2.1.5 Set View polling

- 1> select the "Turn round robin"
- 2> set the polling interval
- 3> Set the video polling stream

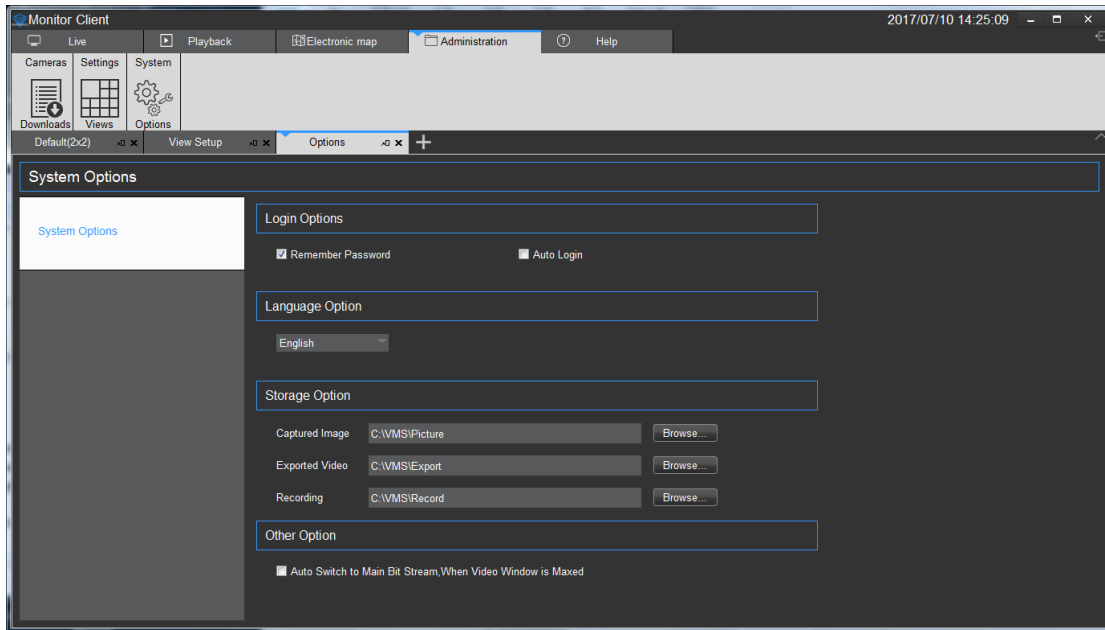


2.2.5.2.1.6 Save Edit

Rear view of editing you must remember to click Save to take effect



2.2.5.3 System parameter settings



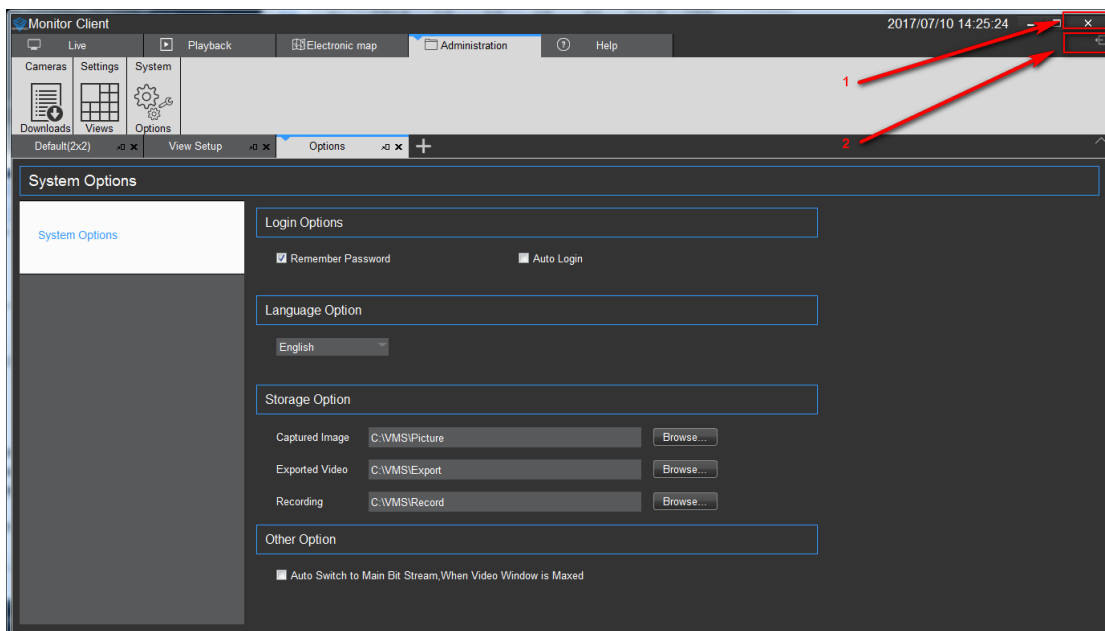
Login Options: You can set whether to remember the password, whether automatic landing

Language options: Set the system language

Storage Options: Set the capture, video recording and video export path

Other: Set whether to automatically maximize the window as the primary stream playback

2.2.6 Logout



1. Quit System

2. Log out of the system