



### Extreme Less Latency

Extreme less network latency provides highly efficiency monitoring environments without system delay.

### Multiple Profile Streaming

"Bryan" cameras support H.265/264/MJPEG Triple codec and multiple streaming capabilities.



Users can select the relevant codec to suit their individual requirement, such as, real-time monitoring, high-quality or high-efficiency recording, mobile monitoring and E-mail notification.



### WDR(Wide Dynamic Range)

WDR is a powerful and ultra-advanced technology that captures cleaner and superior high resolution pictures, even where images appear dark because there is a strong back light present.



### Video Analytics

Video Analytics on the "Bryan" cameras includes: Motion Detection, which detects when a change has occurred in predefined areas in the field of view, Trip zone /Enter/Exit functions, which detect if a breach has occurred in a predefined area and Tampering detection that automatically alarms when a camera is disrupted.



ISO 9001 ISO 14001 RoHS 

## BR-PT100I20X-S

H.265 Network IR PTZ Starlight 20X



### Features

- Starlight Ultra Low Light 0.002lux
- H.265 Compression
- Up to 1920x1080@30fps
- Mechanical WDR 140dB
- Smart IR, IR Range: 100m
- Optical Zoom: 20x, Digital Zoom: 16x
- Speed Max 180°/s, -16~90° Tilt Angle
- NIR, WDR, 3D DNR, HLC, Dual-ICR, AWB, AGC, BLC
- VCA Tripwire/Perimete
- TVS 6000V, Lightning/Surge 4000V Protection, IP66
- Operating Conditions -30°C-65°C, 0~95% RHG
- CE, FCC

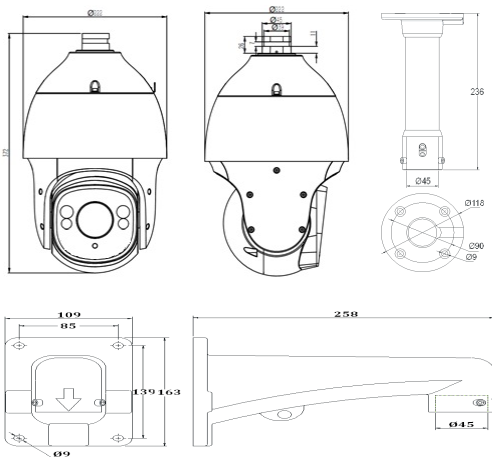
### General

|                      |  |
|----------------------|--|
| Language             | English, Spanish, Korean, Italian, Turkish, Thai, Russian, Polish, French, Traditional Chinese, Simplified Chinese |
| Operating Conditions | -30°C-65°C, 0~95% RHG  |
| Power Supply         | DC12V, POE+  |
| Power Consumption    | 18W MAX  |
| Circuit Protection   | TVS 6000V, Lightning/ Surge 4000V Protection   |
| Impact Protection    | IP66   |
| Wiper                | N/A  |
| IR LEDs              | 4pcs   |
| Dimensions           | 372mmx222mmx222mm  |
| Weight               | 4.3KG (IP PTZ Only), 6.7KG (with Packing Box)  |

### Dimension (unit:mm)

### Weight

4.3KG (IP PTZ Only), 6.7KG (with Packing Box)



## Specifications

| ITEM                  | BR-PT100I20X-S   |
|-----------------------|--|
| Image Sensor          | 1/2.8" CMOS  |
| Effective Pixels      | 1920(H)x1080(V)  |
| Signal System         | PAL/NTSC   |
|                       | Color: 0.002 Lux @(F1.6, AGC ON)   |
| Minimum Illumination  | B/W: 0.001Lux @(F1.6, AGC ON)<br>0 Lux with IR   |
| White Balance         | Auto/ ATW/ Manual  |
| AGC                   | Auto/ Manual   |
| S/N Ratio             | ≥ 55dB   |
| BLC                   | Y  |
| HLC                   | Y  |
| Smart Defog           | Y  |
| WDR                   | 140dB  |
| DNR                   | 3D   |
| Exposure Mode         | Auto/ Manual/ Iris First/ Shutter First  |
| Shutter Time          | 1s-1/100000s   |
| Day& Night            | Dual-ICR   |
| Optical Zoom          | 20x  |
| Digital Zoom          | 16x  |
| Picture Overlay       | 200 × 200, BMP 24bit, Zone Configurable  |
| OSD                   | Size: 16×16, 32×32, 48×48, 64×64<br>Letters, Week, Date, Time, Total 5 Regions                                       |
| <b>Lens</b>           |  |
| Focal Length          | 5.2mm~98mm   |
| Zoom Speed            | Approx. <4s(Optical Wide-Tele)   |
| Angle of View         | 55.8°(w)~3.2°(t)   |
| Min. Working Distance | 1-1.5m(Wide-Tele)  |
| Aperture Range        | F1.5-F3.0  |
| <b>Pan &amp; Tilt</b> |  |
| Pan Range             | 360° Endless   |
| Pan Speed             | Pan Manual Speed: 0.1° -120°/s<br>Pan Preset Speed: 180°/s   |
| Preset Accuracy       | ±0.4°  |
| Tilt Range            | -16°-90° (Auto Flip)   |
| Tilt Speed            | Tilt Manual Speed: 0.1° -120°/s<br>Tilt Preset Speed: 180°/s   |
| Proportional Zoom     | Rotation Speed Can Be Adjusted Automatically According to Zoom Multiples   |
| 3D Position           | Y  |
| Number of Preset      | 256  |
| Scan                  | 8  |
| Cruise                | 4  |
| Pattern               | 4, Each One With 180s Memory or 1000 Orders  |
| Power Loss Recovery   | Y  |
| Guard Action          | Preset/ Cruise/ Pattern/ Scan  |
| PTZ Position Display  | Y  |
| Freeze Frame          | Y  |
| <b>Infrared</b>       |  |
| IR Distance           | 100m   |
| IR Angle              | Adjustable by Zoom   |
| <b>Interface</b>      |  |
| Ethernet              | 1-ch RJ45 10M/ 100M  |
| Alarm Input           | N/A  |
| Alarm Output          | N/A  |
| On-board Storage      | N/A  |
| BNC Output & RS485    | N/A  |
| Extension             | N/A  |
| <b>Network</b>        |  |
| Max.Image Resolution  | 1920×1080  |
| Main Stream           | 1920×1080@25/30fps; 1280×960@25/30fps;<br>1280×720@25/30fps; 1280×720@50/60fps<br>704×576@25/30fps; 704×480@50/60fps |
| Sub Stream            | 704×576@25fps/704×480@30fps<br>352×288@25fps/352×240@30fps<br>176×144@25fps/176×120@30fps                            |
| Third Stream          | 352×288@25fps/352×240@30fps  |
| Image Compression     | H.265/H.264/H.264M/H.264B/MJPEG  |
| Protocols             | TCP/UDP/HTTP/MULTICAST/UPnP/DHCP<br>DDNS/FTP/NTP/RTP/RTSP/SMTP   |
| Remote Connection     | 5 Users Access at the Same Time  |
| User/Host Level       | Up to 8 Users, 4 Levels  |
| Web Browser           | IE8/Firefox24 or above   |
| System Compatibility  | ONVIF (Profile S), SDK, CGI  |

(\*) Design and specifications are subject to change for product improvements without prior notice.